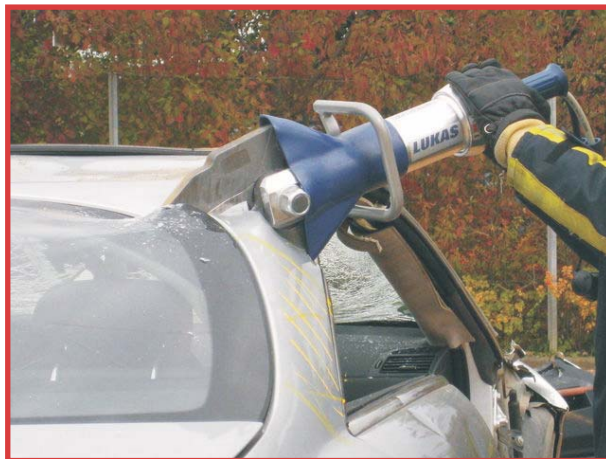


World Rescue Challenge 2009

Lukas Rescue Equipment recently sponsored the World Rescue Challenge, which was held in Frankfurt, Germany from 21st – 24th October. This was the first time the event had been held in Lukas' home country.

A total of 30 teams from 15 countries, including Australia, England, Scotland, Wales, Canada, Spain, USA & Ghana, faced different rescue scenarios in three arenas. PT Rescue would like to offer special congratulations to Bacchus Marsh SES for placing 4th in the Rapid Scenario, a commendable result given that some of the world's best Rescue Teams were in attendance. Congratulations also go to the team from Royal Berkshire (England) who placed first overall in the Rescue Challenge.



Knowledge, ideas & rescue techniques were freely shared between the teams, meaning that all teams left the competition having gained valuable experience. From Lukas' point of view, the competition was a great success, especially highlighted by the team from the United States exchanging their existing equipment for Lukas Rescue Tools after seeing a demonstration of the new generation of Streamline tools.

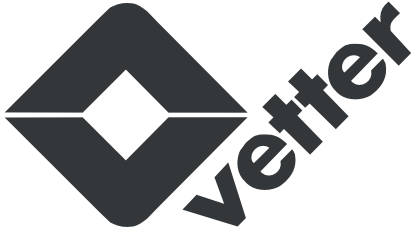
More information on this competition, as well as Lukas' recent 'Operational Training Weekend', which simulated extreme rescue situations, is available from the Lukas website at www.lukas.de

We hope you and your family have had a Happy and Safe Christmas & New Years, and we wish you the best of luck for a successful 2010.



Inside this issue

New Products Vetter Water Tanks	2
Quarterly Specials Insulated Combi Tool, Single Hose Reel, RCR Crib Kit	3
Guide to Maintenance	4



Water Tanks

Vetter have added a new product to their impressive range of HAZMAT & Environmental Protection Equipment. We are now able to supply Open & Closed water storage tanks. These tanks can be used to store clean or dirty water for a variety of uses, such as fire fighting, storms or industrial accidents. There are three different models available, ranging in size from 500 - 100,000 Litres.



Open Water Tanks

Vetter Open water tanks (OWT) are constructed of PVC material having a temperature resistance range from -30°C to $+70^{\circ}\text{C}$. They are fitted with a 2" anodized aluminium flange and a high-strength PVC ball valve. Filling and emptying of the tank is achieved via a 4" Storz connection. They are lightweight & self-erecting, requiring minimal manpower & time, and range in size from 1,000 to 20,000 litres.



Closed Water Tanks

The re-enforced PVC Material of the Vetter Closed Water Tanks (GWT) gives a high degree of stability. Like the OWT, they have a 2" Anodized aluminium flange, a high-strength PVC ball valve and feature quick & easy assembly & disassembly. Sizes range from 500 to 100,000 litres.

Food Grade Closed Water Tanks



The Food Grade Closed Water Tanks (GWT-L) contain the same features as the GWT, such as a high degree of stability, temperature range from -30°C to $+70^{\circ}\text{C}$ and a size range from 500 to 100,000 Litres. Also as an option on both the GWT-L & GWT, stable fasteners can be fitted to the corners of the tank for safe transport on a truck loading area. The unique feature of the GWT-L is that is constructed from a Food-Grade PVC Material, making it especially suited for storage of drinking water.

Lukas LKS35Fi Insulated Combi Tool

This unique rescue tool has a current insulation system, especially developed for working on Hybrid cars with additional high-voltage electric motors. The tool is safe to a voltage of 1500 V DC or 1000 V AC, is equipped with 3 metre non-conductive hydraulic hoses & all moving mechanical parts are covered & insulated for operator safety. It can be used with existing equipment, such as Pumps & Hose Reels, and can be supplied with either twin-line or Streamline Couplings.



\$8,930.00 + GST

Until 30th April 2010 or until stock runs out.

Lukas Single Hose Reel with 20m Hose

The Lukas Single Hose Reel is fitted with a 20m Hose, which can be fitted with either twin-line or Streamline Couplings. The hose, as with all new Lukas hoses, is glow in the dark. The complete Hose Reel with hose & couplings weighs 16.8 kg.

If you already have your own loose hose & do not wish to replace it, we can also supply a Bare Hose Reel for \$2,105.00 + GST, solving any hose storage & portability issues you may have.



\$4,210.00 + GST

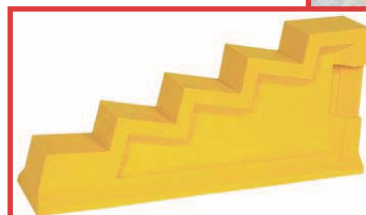
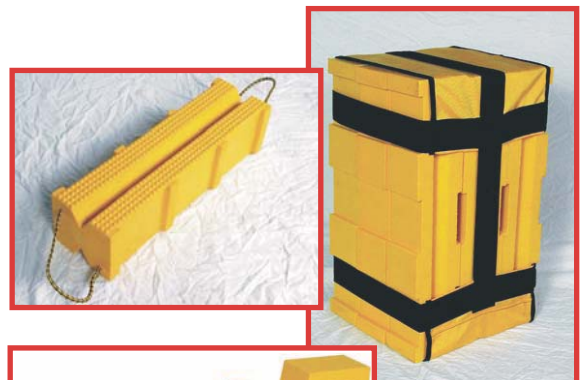
Until 30th April 2010 or until stock runs out.

Road Crash Rescue Cribbing Kit

PT Rescue's Standard Road Crash Rescue Cribbing Kit now comes in two nylon carrying bags, and includes a 'Tote Bag' (pictured right) for easy transportation.

The kit consists 29 pieces of cribbing, including wedges, lincoln logs, cribs, lock blocks & step chocks.

It is made entirely of recycled plastics, and as with all products from Turtle Plastics, at the end of its useful life, you can return it to PT Rescue and we will recycle the plastic, ensuring it does not end up in landfill. Please note, the standard colour for PT Rescue cribbing is black.



\$1,995.00

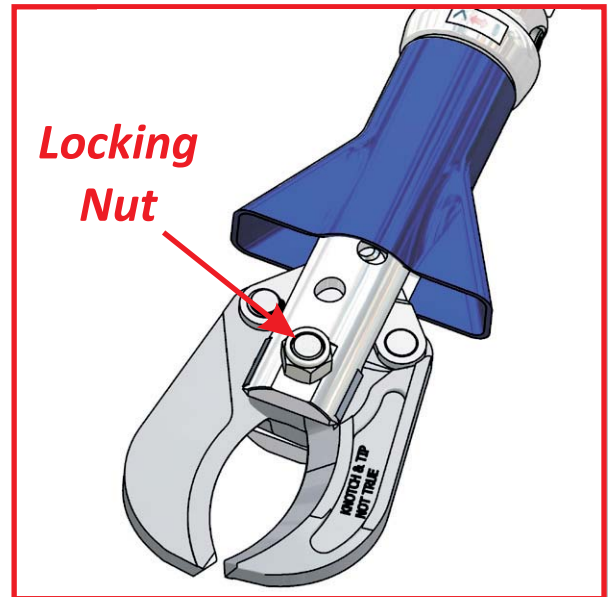
+ GST

Until 30th April 2010
or until stock
runs out.

Correctly Tensioning the Centre Bolt on Lukas Cutters & Combi Tools

Maintaining the correct tension on the Centre Bolt of your Lukas tools is of critical importance. The centre bolt should be tensioned on a regular basis to ensure the correct operation of the cutter and combi tool. The actual frequency of checking the tension is dependent on use. For normal road crash rescue operations and training the torque setting should be checked every 3 months. Where the tool has been subject to heavy operational use, such as in Urban Search & Rescue, they should be checked on completion of the work.

The irregular or non completion of this maintenance may result in diminished performance of the tool.



Method for Checking Centre Bolt Tension

- Fold back the protective boot and remove any debris or liquids that may have collected
- Visually inspect locking nut and centre bolt for damage
- Loosen locking nut by 1/4 of a turn
- Adjust torque wrench to correct setting and tighten nut
- Re-position protective boot
- Torque settings for some tools are listed below. For those not listed either view our website at www.pthydraulics.com.au or contact PT Rescue on 03 9562 8800 or rescue@pthydraulics.com.au



Tool Type		Torque Setting
Twin coupling	Streamline	
LS301-EN	S311	MA = 120+10 Nm
LS 310-EN	S310	MA = 120+10 Nm
LS 330-EN	S330	MA = 120+10 Nm
LS501-EN	S510	MA = 130+10 Nm
LS530-EN	S530	MA = 130+10 Nm
LS511-EN	S511	MA = 130 +10 Nm
LKS 35-EN	SC350	MA = 120+10 Nm
LKS55-EN	SC550	MA = 130 +10 Nm