

### World Rescue Challenge 2008

The World Rescue Organisation (WRO) Challenge was recently held in Wales, from 9 – 12th July. This year's event was hosted by the South Wales Fire & Rescue Service, and aimed to give rescue personnel the chance to improve their skills, as well as exchange information and share ideas. PT Hydraulics, along with PT Rescue, were proud to be a sponsor of the Emergency Response Team (ERT) from Wesfarmers Curragh to compete as the only team from Australasia. The team were supported by PT Rescue's sister organisation in the UK – CLAN Rescue Tools who provided support to the team throughout the event with Lukas Rescue Tools; Stabfast and other items.

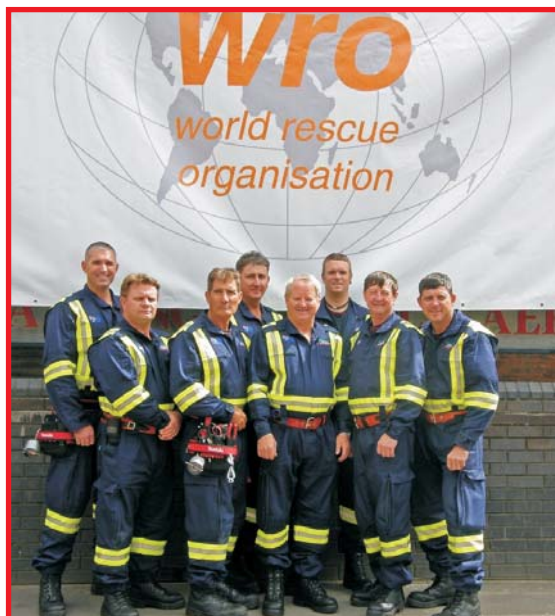
Eight members of Curragh's ERT travelled to Cardiff to compete in the four-day event, along with 30 of the best rescue organisations from around the world. The team performed admirably to finish the event in 10th position.

Wesfarmers Curragh Executive General Manager, Rod Bridges, said the team's placing was a tremendous result.

"We are exceptionally proud of the team's performance in this event, especially considering that many of the teams competing were full-time dedicated rescue organisations."

"It is a tremendous honour for the Curragh ERT to be invited to participate in this event as representatives of Australasia and to have the team perform so remarkably is a testament to their skills and efforts."

PT Rescue would like to congratulate the Emergency Response Team from Wesfarmers Curragh on their tremendous efforts and the support given to them by Wesfarmers.



*Wesfarmers Curragh ERT*

#### Quarterly Specials & Trade in Stock

Our new quarterly specials have been release on the PT Rescue website. Valid until the end of December, specials include large savings on Breathing Air Compressors ranging from 100 - 630 Litres per minute, Lukas 45T Spreaders, a Vetter Pneumatic Tent set, and a range of other useful Rescue Equipment.

Our Trade-in stock has also been updated, presenting an excellent opportunity to save money on second hand Lukas Pumps, Cutters, Spreaders, Rams or Combi Tools.

#### Inside this issue

<b>New Products</b>	
Lukas Concrete Crusher	2
<b>Smart Solutions for Rescue Operations</b>	
Undeployed Airbags	3
Crash Recovery System	4 - 5
<b>Product Update</b>	
Airshore	6
<b>Around the Rescue Scene</b>	
Urunga SES Incident	7
<b>Guide to Maintenance</b>	
Hydraulic Pumps	8

# New Products - Lukas Concrete Crusher

## ...for fast, silent and clean Urban Search & Rescue Applications

This compact tool is designed to crush concrete and cut reinforcing rods with different contact points on the same tool arm.

### Recommended Applications

- Easily crushes up to 20cm thick concrete walls
- Highly suitable for stone walls made of aerated concrete, bricks etc.
- Cuts reinforcing bars and other metal parts
- Allows precisely dimensioned demolition of walls
- Produces a precise opening in a wall during reconstruction

### Highlights

- Incredible crushing and cutting power
- Precise control in any work position using the exclusive LUKAS star grip valve
- Durable sliding plates for long life in tough environments
- A Heavy Duty Pivot bolt with a lubrication fitting nearly eliminates teardown for preventative maintenance and greatly increases the life of key components.

### Ergonomic Benefits

- Crushing concrete and cutting reinforcing bars with the same tool
- Creates no vibration and won't contribute to hand-arm vibration syndrome (HAVS) normally associated with jack hammers or other percussive equipment
- Creates no dust
- No noise like that associated with demolition hammers and saws

<b>Blade Opening</b>	<b>309 mm</b>
<b>Crushes Concrete type B</b>	<b>195 mm</b>
<b>Cuts reinforcing bars</b>	<b>28 mm</b>
<b>Dimensions: L x W x H</b>	<b>785 x 250 x 170 mm</b>
<b>Weight</b>	<b>22.7 Kg</b>



# Smart Solutions for Rescue Operations

## Managing the risk of Undeployed Airbags Lukas Airbag Secure Systems

In today's motor vehicles (including Trucks) you will find a range of 'In Built Vehicle Safety Systems', the most common of these being the Supplementary Restraint System (SRS) Airbags. These are designed to supplement the vehicles seat belt system in the event of an accident.

SRS airbags can be found in a range of locations – driver (steering wheel hub); passenger (glove box area); side curtain (roof rails – pillars); Side Airbags (front seats/'B' Pillar); Thorax Bags; etc.

It is impossible and impractical to provide safety systems for all these airbags based on locations and time required to set up – the most effective method of managing the risk of undeployed airbags is the adherence to good agency standard operating procedures (SOP's) for working around undeployed airbags.

To compliment agency SOP's in managing this risk PT Rescue have a range of Airbag Secure Systems designed to mitigate the effects of airbags should they deploy during rescue operations.

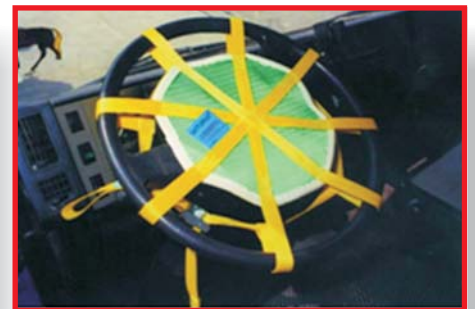
### PT Rescue provide 3 types of Airbag Safe Systems



**Driver Side**



**Passenger Side**



**Truck**

**Note:** These devices are reusable after each application but must be replaced for safety purposes if it catches a deploying airbag.

**Please contact PT Rescue if you would like a New Vehicle Technology DVD that shows the benefits of Lukas Air Bag Secure Systems.**

# Smart Solutions for Rescue Operations

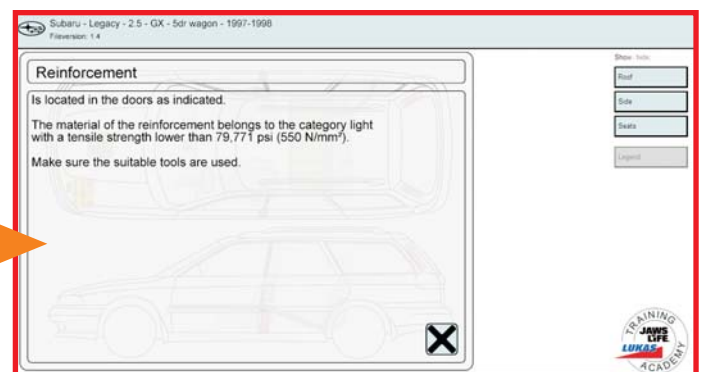
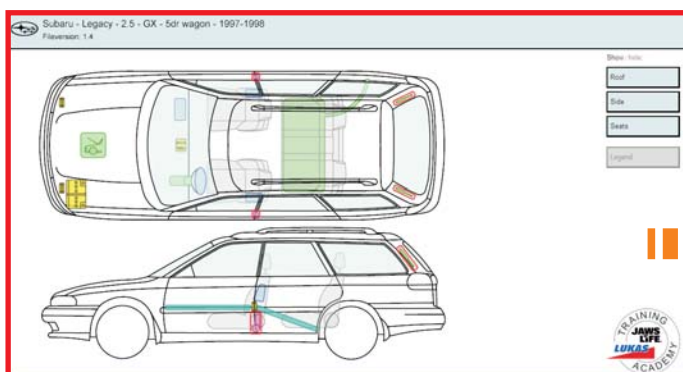
## Crash Recovery System (CRS)

In the case of serious accidents, seconds may make the difference between life and death. Emergency rescue teams have to be able to act immediately. Within the automotive industry, technological developments, such as new safety systems and high strength reinforcement materials, are ensuring that rescue workers are continually facing new challenges, as well as new risks. Non-inflated Airbags, stored gas inflators and newly developed alternative propulsion systems are just a few examples of potential dangers which are now acting as barriers to both rescue workers and passengers. Identifying and controlling the risks of these components is of foremost importance to modern rescue operations. However, this is not an easy task, as components differ from vehicle to vehicle, and new models and safety features are constantly being developed.



PT Rescue has been searching for innovative ways to assist the Rescuer, and is now proud to introduce the Crash Recovery System (CRS). This software, which can be run on desktop computers, laptops, tablet PC's and even Palm Pilots, clearly shows the locations and deactivation instructions for potentially dangerous components in over 25,000 different vehicles, including safety systems, electronic components and high-strength metals. The exact location of these components is shown in clearly organised, colour-coded graphics, including detailed information on each component and deactivation instructions. Specially developed for emergency responders, it provides an invaluable source of information for the extrication of trapped occupants from crashed vehicles, whilst minimising the risk for both rescue worker and casualty. This software is even more valuable to rescue organisations as it can be used as both an operational asset as well as a training tool.

A Demonstration version, with a limited number of vehicles and information about vehicle components is available for download from <http://www.pthydraulics.com.au/>. If you require any further information, please do not hesitate to contact PT Rescue.



**Identify the vehicle from the list of over 25,000 available vehicles. CRS then displays potentially dangerous components such as safety systems, electronic components & high-strength metals.**

**By clicking on any of the components, specific information is displayed, such as tensile strength, power supply drain times, potential dangers of the particular component and deactivation procedures.**

# Software Release at the 2008 World Rescue Challenge

CRS used the 2008 World Rescue Challenge in Wales to release its new software update. This event, which is one of the highest profile competitions for Fire & Rescue in the world, showcases some of the world's finest rescue teams, as well as new developments in products and technology. This year's event was hosted by South Wales Fire & Rescue Service in Cardiff from July 9 – 12. This latest version of CRS now features 1200 Right Hand Drive vehicles manufactured from 1998 or later, with this number continuously growing. This new software version is also set to include Regional Adaptations, with plans for an Australian version to include locally built vehicles.



## Up to Date

The system is continuously being expanded with new vehicles, including trucks and buses. Users update their software over the Internet, ensuring the most up-to-date vehicle listings are available. Internet updates provide a high-level of security, more flexibility and greater ease of use. Web updates also ensure that the CRS will be ready for the hydrogen-cell and fuel-cell vehicles of the future.

## New Vehicle Technology

The latest software release of CRS includes information on a number of hybrid vehicles. Components covered include High Voltage Components, Fuel Cells, Ultra-capacitors and similar components. This information outlines both the location of the systems, and step-by-step deactivation procedures.



## Time Saving

As previously mentioned, the software can be run on a desktop computer, laptop, tablet PC or even a Palm Pilot. This can provide the rescuer with instant access to vehicle information at the scene of the accident, or even on the way to the accident if the vehicle type is known. This means that no time is wasted scanning the vehicle for the location of potentially dangerous components, while deactivation instructions quickly eliminate the hazards.

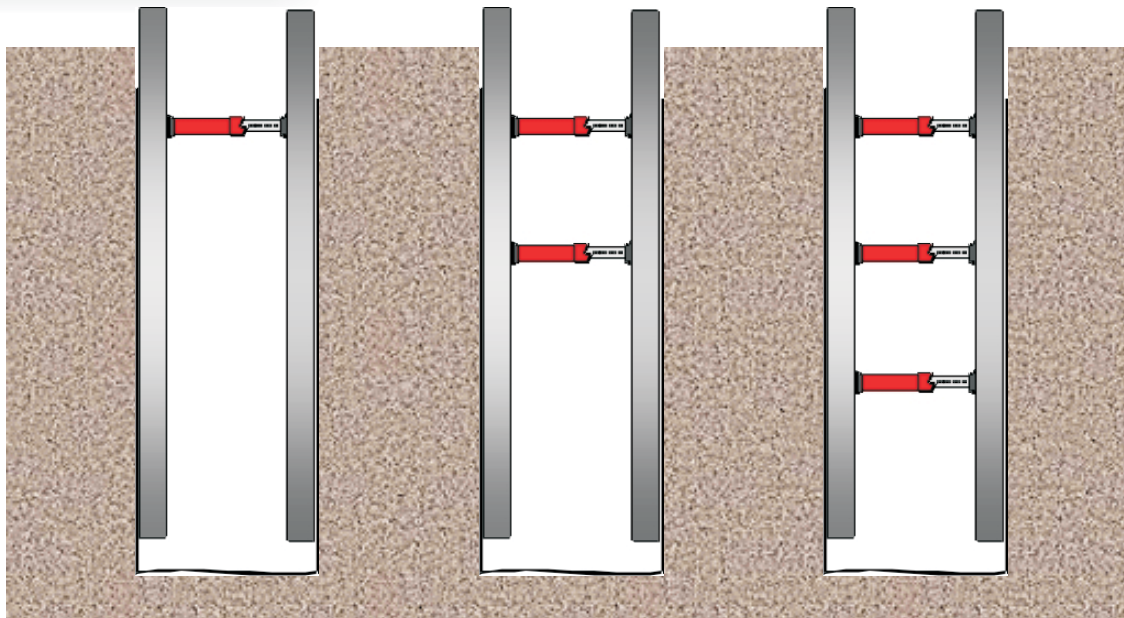
# Vetter Airshore Rescue Equipment



Vetter Airshore has just released its new Catalogue on Rescue Equipment. Airshore produce world leading Shoring & Stabilisation equipment, which can, depending on the application, be used either pneumatically or manually.

The new Catalogue contains a number of pre-assembled kits, including Trench Rescue kits and Structural Collapse kits, perfect for Equipment Caches. Shown below is a basic illustration showing how Airshore is used in Trench Rescue applications and some pictures of the equipment in use.

The new Catalogue is available for download from the PT Hydraulics website. Upon request, PT Rescue can also provide a Training DVD on Technical Rescue using the Airshore product range.



*Step 1: Install sidewalls and upper Airshore*

*Step 2: Install required Airshore in descending order*



*Trench Rescue*



*Structural Collapse*



*Ceiling & Wall Shoring*

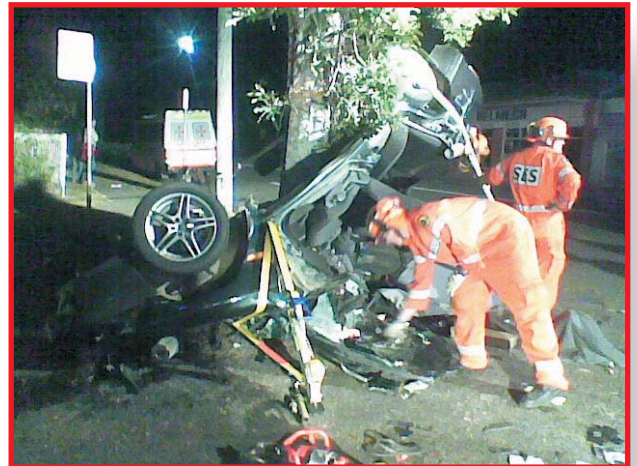


*High Strength Tripod*

# Around the Rescue Scene

## Urunga SES Incident Sunday 17th August 2008

*The following letter was received from Peter Butt, Rescue & Training Officer from Urunga SES Unit in New South Wales. Having recently received a set of Stabfast, the unit immediately put it to use when they arrived at an accident on August 17th. The photos shown are from the accident scene. Peter had the following to say about the Stabfast Stabilisation System:*



Dear PT Rescue,

It is with great pleasure that we are able to supply feedback on the Stabfast Stabilisation System which we purchased after the Hawkesbury Rescue Show. We here at the Urunga unit were impressed at the Expo and decided to purchase a set of Stabfast, and incorporated its use into our training program, where we have found it very quick and easy to use.

At 1.45am on Sunday 17th August 2008 in Bellingen NSW, we used the Stabfast Stabilisation System for the first time in a rescue situation. Upon arrival at the scene, we found a 1993 Subaru Turbo that had impacted into a concrete bollard and flipped, before finally impacting sideways into a tree (pictured). Stabilisation was our first and major concern as there were two young males trapped inside the vehicle. Stabfast allowed us to use a minimal number of personnel to stabilise the vehicle, giving us more hands for vital jobs such as preparing tools. Not only did Stabfast allow rapid stabilisation, but it also allowed the NSW Ambulance Paramedics safe, easy and unimpeded access to the casualties. Its flexibility in design also allowed us to alter stabilisation configuration throughout the incident, which created a free and clear work area for us to create a roof flap, through which we were able to extricate the casualties.



During our training on all types of vehicles we have been using Stabfast, in conjunction with our normal step blocks, even when the vehicles are upright and on all four wheels. We have found this very advantageous as the risk of vehicle movement is greatly diminished if not removed completely.

I can only look forward to our service making Stabfast a standard piece of equipment to our primary rescue units.

Thanks for supplying such a useful and user friendly product.

**Peter Butt**

Rescue / Training Officer, Urunga SES.

# How to take care of your Lukas Hydraulic Pump

In this instalment in our series about preventative maintenance of Lukas rescue tools, we will discuss the importance of regularly checking your pumps. Pumps are the heart of your hydraulic tool set and if they are not performing optimally, the performance of the rest of your tools may be compromised. These checks are the same irrespective of the model and type of pump (petrol, diesel, electric or air). A visual and function check should be carried out after each use of the pump. The pump unit should be checked for correct hydraulic oil level, oil leakage on the valve block and reservoir seal and damage to carrying frame. Couplings (and fittings) and hoses connected to valve block should also be inspected. Petrol engines should be visually checked for oil and petrol leaks, correct motor oil level and the condition of the pull cord. The condition of electric leads and plugs and on/off switches on electric motors must be checked. Look for external damage on the motor and engine (protective cover and exhaust cover). Whilst the pump is being run listen for any abnormal revving or labouring of the motor. Pumps not used on a regular basis should be started and checked on a weekly basis. The fuel storage containers must be inspected regularly, ensuring that the condition of the fuel is checked. Stale fuel must be correctly disposed of, as using this fuel will ultimately affect the performance of the motor. We also recommend the use of 'fuel savers', available from most local mower shop.



It is important to pick up on minor faults before they become more serious, ensuring reduced maintenance costs in the long run. For more information, please call PT Hydraulics on (03) 9562 8800 or email [rescue@pthydraulics.com.au](mailto:rescue@pthydraulics.com.au).

Over the past 5 years, PT Rescue has greatly expanded its product range, to keep up-to-date with the latest in Safety & Rescue equipment. Below is a short list of our most prominent brands, and the products they provide. If you require any further information about products or services offered by PT Rescue, please do not hesitate to visit our website at [www.pthydraulics.com.au](http://www.pthydraulics.com.au) or call our Head Office on (03) 9562 8800.



**Lukas (Germany)** A world leader in hydraulic rescue equipment.



**Airshore (Canada)** Shoring & stabilisation equipment



**Stabfast (Netherlands)** Vehicle stabilisation & racking equipment



**Vetter (Germany)** High tonnage lifting air bags & environmental protection equipment



**Petrogen (USA)** Pioneering the use of Petrol as a fuel in Oxy-cutting torches



**Turtle Plastics (USA)** Cribbing equipment & safety flooring



PT Hydraulics Australia Pty Ltd  
19 Ricketts Road  
Mt. Waverley  
VICTORIA 3149



Phone: (03)9562-8800  
Fax: (03)9562-8080  
Email: [rescue@pthydraulics.com.au](mailto:rescue@pthydraulics.com.au)  
Website: [www.pthydraulics.com.au](http://www.pthydraulics.com.au)