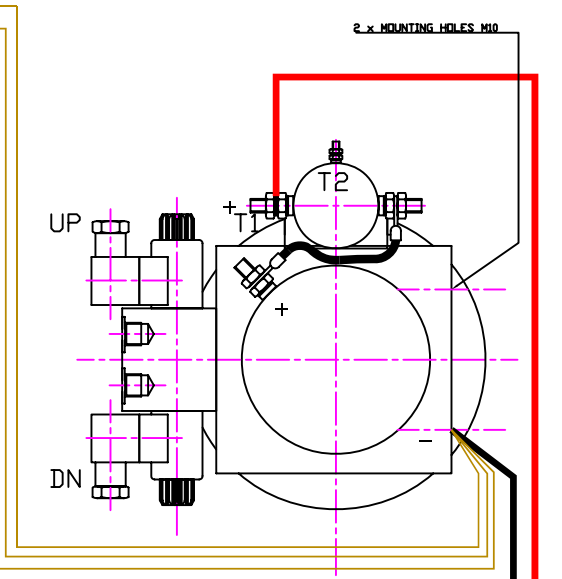
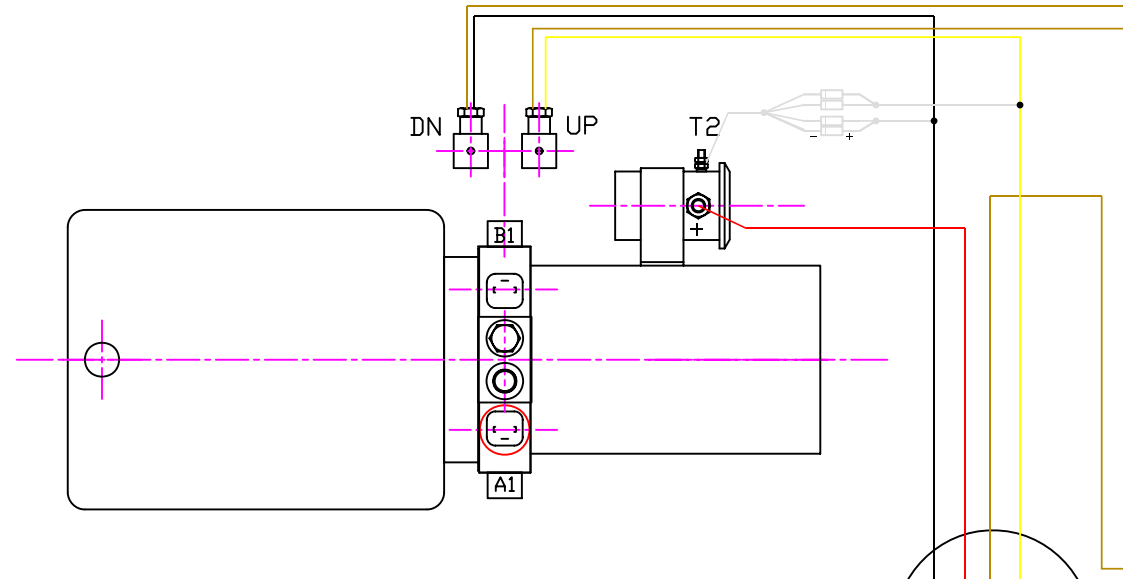
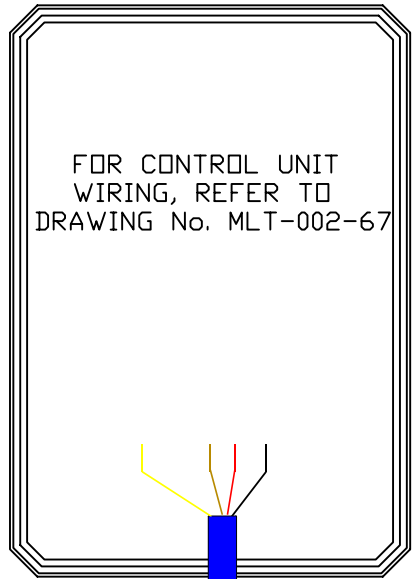




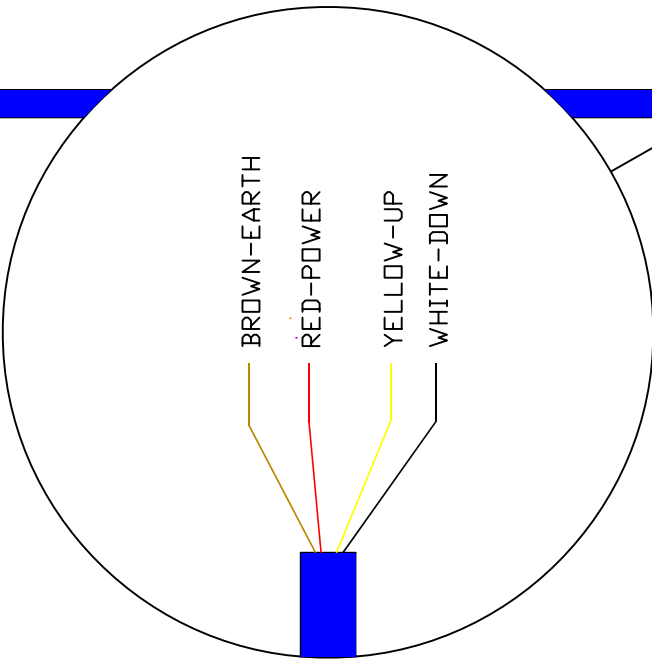
PT WIRELESS PENDANTS

PART NUMBER	USED WITH	INSTRUCTIONS
PENWIR2	STONE S/ACT POWER UNIT	Connect Motor lead to motor start solenoid and din plug lead to lowering solenoid.
PENWIR2DA	STONE D/A POWER UNIT WITH A SINGLE 4W3P VALVE	Connect Motor lead to motor start solenoid and din plug leads (2) to 4W3P valve solenoids
	STONE D/A POWER UNIT	Connect Motor lead to motor start solenoid and din plug lead to reversing solenoid. One din plug will not be used.
	AC POWER UNIT WITH A SINGLE 4W3P VALVE	Connect din plug leads (2) to 4W3P valve solenoids and do not use motor start lead
PENWIR4	STONE DC POWER UNIT WITH 2 4W3P D/A VALVES ONE VALVE DRIVING A S/A CYLINDER	Connect din plug leads (4) to valve solenoids and motor lead to motor start solenoid. Note; This is used when using a S/A cylinder as first function, blocking the B port in the valve.
	AC POWER UNIT WITH 2 4W3P D/A VALVES	Connect din plug leads (4) to 4W3P valve solenoids and do not use motor start lead
PENWIR4DA	STONE DC POWER UNIT WITH 2 4W3P D/A VALVES	Connect din plug leads (4) to valve solenoids and motor lead to motor start solenoid.
	AC POWER UNIT WITH 2 4W3P D/A VALVES	Connect din plug leads (4) to 4W3P valve solenoids and do not use motor start lead
PENWIR6	STONE DC POWER UNIT WITH 3 4W3P D/A VALVES ONE VALVE DRIVING A S/A CYLINDER	Connect din plug leads (6) to valve solenoids and motor lead to motor start solenoid. Note; This is used when using a S/A cylinder as first function, blocking the B port in the valve.
	AC POWER UNIT WITH 2 4W3P D/A VALVES	Connect din plug leads (6) to 4W3P valve solenoids and do not use motor start lead
PENWIR6DA	STONE DC POWER UNIT WITH 3 4W3P D/A VALVES	Connect din plug leads (6) to valve solenoids and motor lead to motor start solenoid.
	AC POWER UNIT WITH 3 4W3P D/A VALVES	Connect din plug leads (6) to 4W3P valve solenoids and do not use motor start lead
Other Functions are available on request. Contact PT Hydraulics for further information		

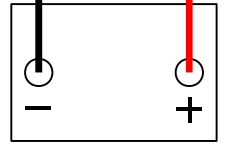
RADIO REMOTE CONTROL UNIT



CONTROL MODULE TO BE MOUNTED SUCH THAT THE FRONT OF THE UNIT IS ACCESSIBLE TO ALLOW EASE OF SYNCHRONISATION



IMPORTANT
A NEGATIVE CONNECTION FROM THE POWER PACK TO THE BATTERY MUST BE MADE USING THE LEAD SUPPLIED

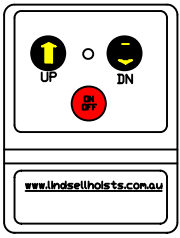


12 Vdc

IMPORTANT - CHECK PACK BRAND
THIS WIRING DIAGRAM IS ONLY FOR USE WITH A **STONE** POWER PACK

ISSUE	DESCRIPTION	BY	DATE

WIRING DIAGRAM 2 BUTTON PT RADIO REMOTE POWER DOWN	DRN	G.D.K.
	DATE	13.3.09
	SCALE	
	DRG No	MLT-002-91



HAND CONTROL

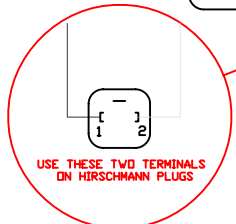
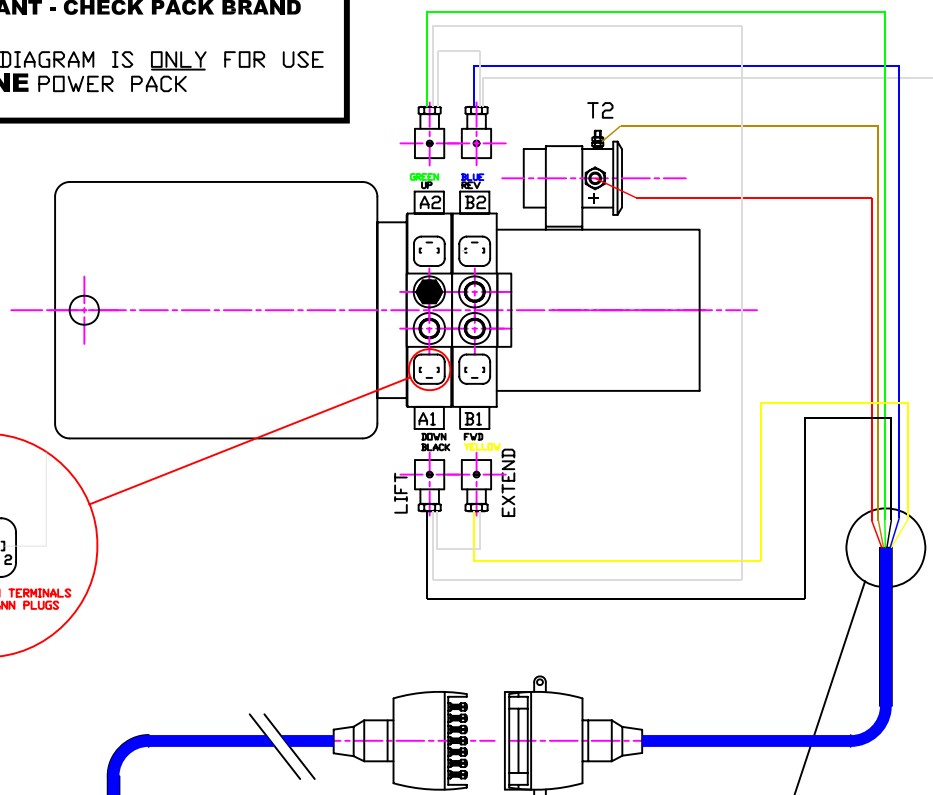
FOR TRAILER PLUG CONNECTIONS REFER TO DRAWING MLT-002-42

ALL ELECTRICAL CONNECTIONS BE CARRIED OUT BY A QUALIFIED AUTOMOTIVE ELECTRICIAN



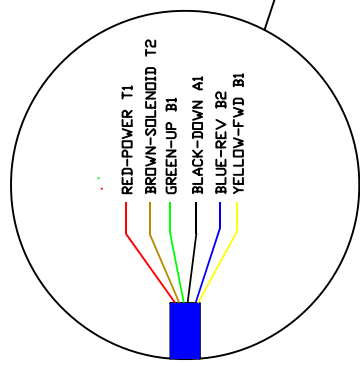
IMPORTANT - CHECK PACK BRAND

THIS WIRING DIAGRAM IS ONLY FOR USE WITH A **STONE** POWER PACK

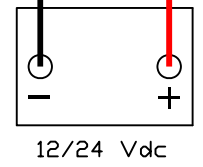
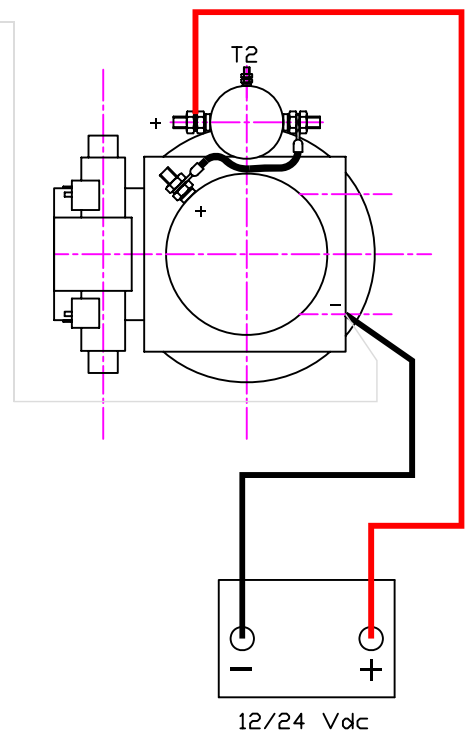


USE THESE TWO TERMINALS ON HIRSCHMANN PLUGS

FOR TRAILER PLUG CONNECTIONS REFER TO DRAWING MLT-004-17



FOR HANDSET WIRING REFER TO DRAWING NO. MLT-004-09



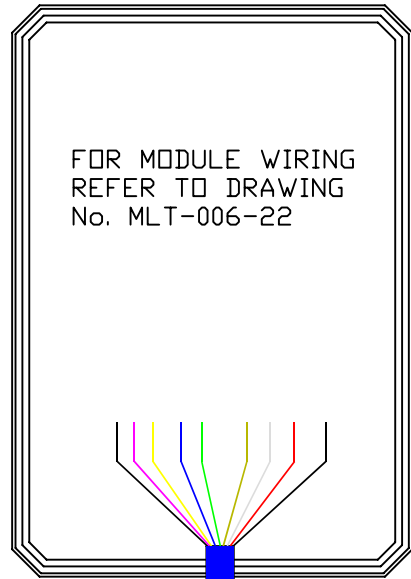
IMPORTANT
A NEGATIVE CONNECTION FROM THE POWER PACK TO THE BATTERY MUST BE MADE USING THE LEAD SUPPLIED

ALL ELECTRICAL CONNECTIONS BE CARRIED OUT BY A QUALIFIED AUTOMOTIVE ELECTRICIAN

4	TRAILER PLUGS ADDED	G.D.K.	19.1.07
3	EARTH WIRING AMENDED	G.D.K.	11.10.06
2	TRAILER PLUG NOTE	G.D.K.	23.8.06
1	CABLE COLOUR CHANGE	G.D.K.	22.6.06
ISSUE	DESCRIPTION	BY	DATE

WIRING DIAGRAM 4 BUTTON STD PT PACK		DRN	G.D.K.
		DATE	29.3.06
		SCALE	N.T.S.
		DRG No	MLT-004-04

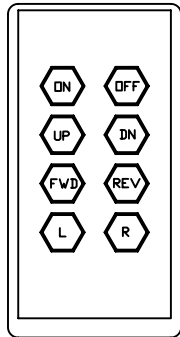
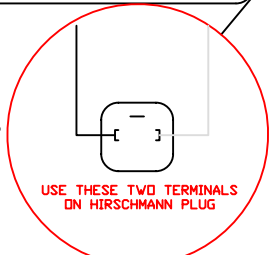
RADIO REMOTE CONTROL UNIT



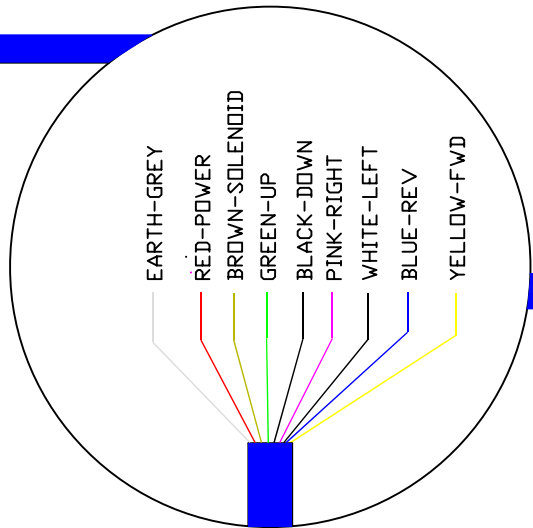
FOR MODULE WIRING
REFER TO DRAWING
No. MLT-006-22

IMPORTANT - CHECK PACK BRAND
THIS WIRING DIAGRAM IS ONLY FOR USE
WITH A **STONE** POWER PACK

CONTROL MODULE TO BE MOUNTED
SUCH THAT THE FRONT OF THE UNIT
IS ACCESSIBLE TO ALLOW
EASE OF SYNCHRONISATION



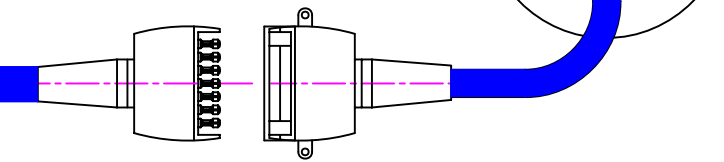
HAND CONTROL



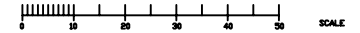
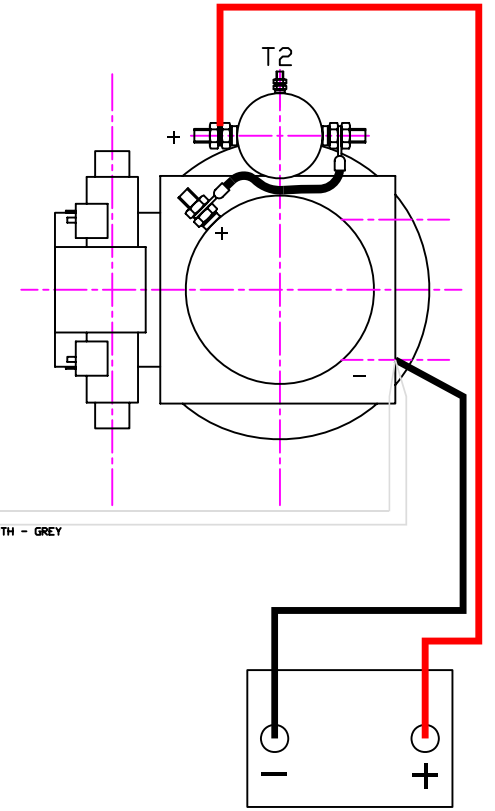
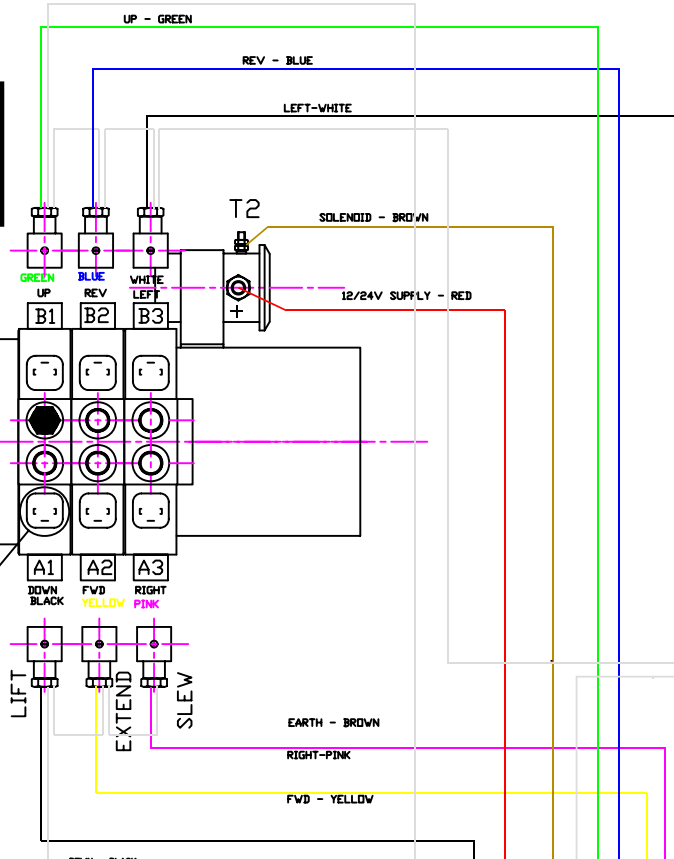
ALL ELECTRICAL

**CONNECTIONS BE CARRIED OUT BY A QUALIFIED
AUTOMOTIVE ELECTRICIAN**

FOR TRAILER PLUG CONNECTIONS
REFER TO DRAWING MLT-006-27



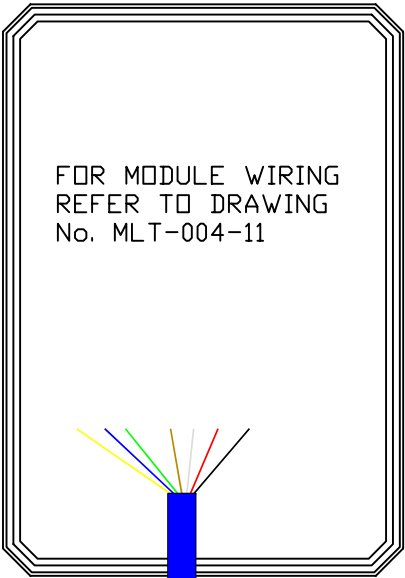
IMPORTANT
A NEGATIVE CONNECTION FROM THE POWER PACK
TO THE BATTERY MUST BE MADE USING THE
LEAD SUPPLIED



ISSUE	DESCRIPTION	BY	DATE
4	TRAILER PLUGS ADDED	GDK	18.5.07
3	EARTH WIRING AMENDED	GDK	11.10.06
2	TRAILER PLUG NOTE	GDK	23.8.06
1	WIRING COLOURS	GDK	22.8.06

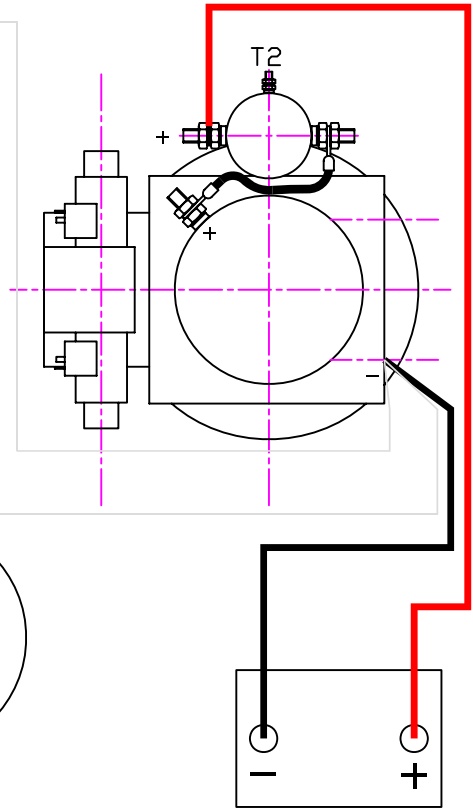
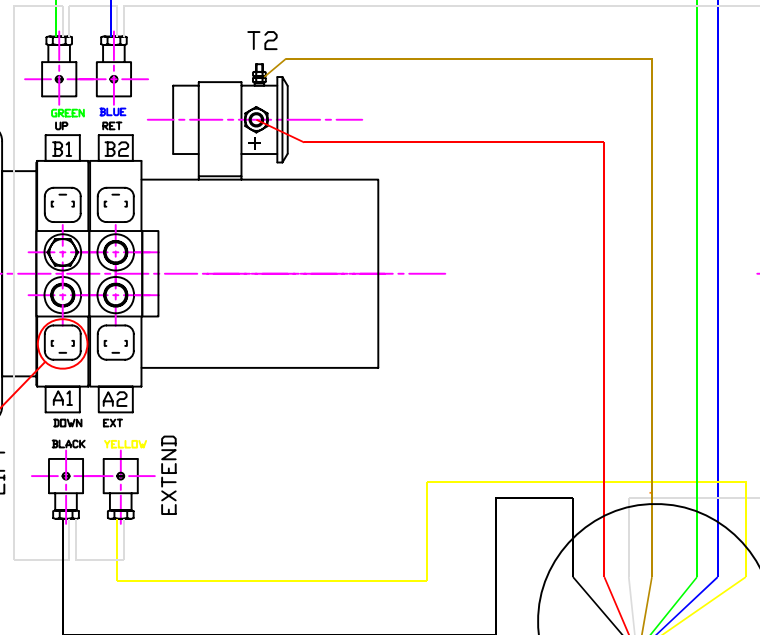
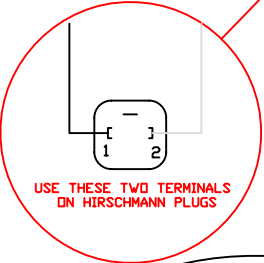
WIRING DIAGRAM JRT PT PACK RADIO REMOTE	DRN	G.D.K.
	DATE	26.4.06
	SCALE	
	DRG No	MLT-006-13

RADIO REMOTE CONTROL UNIT



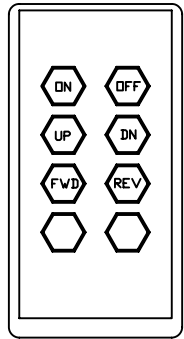
IMPORTANT - CHECK PACK BRAND
 THIS WIRING DIAGRAM IS ONLY FOR USE WITH A **STONE PDVER** PACK

CONTROL MODULE TO BE MOUNTED SUCH THAT THE FRONT OF THE UNIT IS ACCESSIBLE TO ALLOW EASE OF SYNCHRONISATION

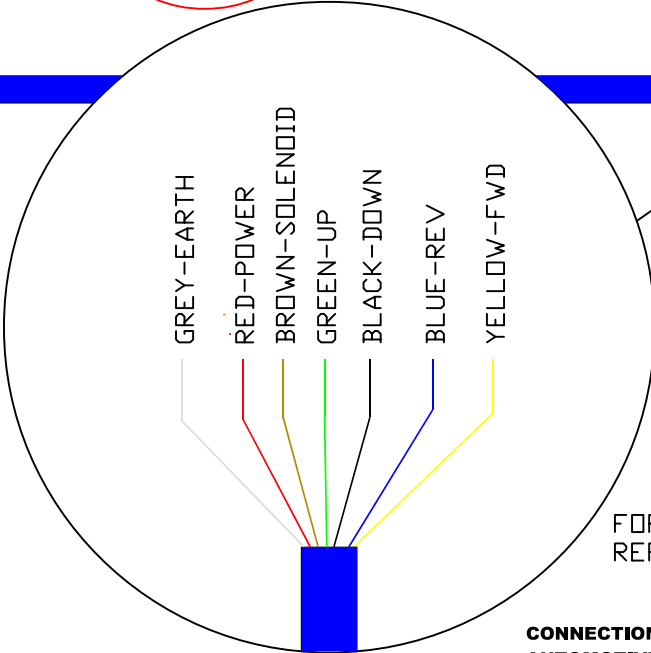


12 Vdc

IMPORTANT
 A NEGATIVE CONNECTION FROM THE POWER PACK TO THE BATTERY MUST BE MADE USING THE LEAD SUPPLIED



HAND CONTROL



FOR TRAILER PLUG CONNECTIONS REFER TO DRAWING MLT-004-23

ALL ELECTRICAL CONNECTIONS BE CARRIED OUT BY A QUALIFIED AUTOMOTIVE ELECTRICIAN

ISSUE	DESCRIPTION	BY	DATE
3	EARTH WIRING AMENDED	GDK	11.10.06
2	TRAILER PLUG NOTE	GDK	23.8.06
1	NOTES ADDED	GDK	6.7.06

WIRING DIAGRAM
 4 BUTTON PT
 RADIO REMOTE

DRN	G.D.K.
DATE	26.4.06
SCALE	
DRG No	MLT-004-07

