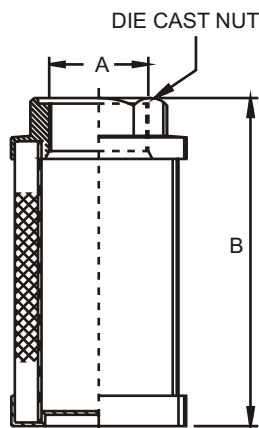
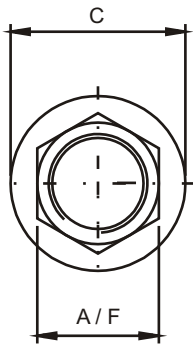


SUCTION STRAINER

- REUSABLE SS 100 MESH / 149 MICRON STD.
- ALUMINIUM DIE CAST NUT
- STEEL CAP / SUPPORT TUBE
- CONTINUOUS EPOXY BOND
- MAX. WORKING TEMP. 80° C.
- SUITABLE FOR HYDRAULIC / MINERAL OIL



MODEL NO	FLOW LPM	THREAD IN. BSPP A	OVERALL LENGTH B	DIA NUT CAP C	NUT A/F	SCREEN AREA (SQ. CMS)	WT KGS
SC3 -002	8	1/4	90	46	24	187	0.10
SC3 -003	12	3/8	90	46	24	187	0.10
SC3 -005	20	1/2	105	46	30	226	0.10
SC3 -007	28	3/4	109	64	35	406	0.20
SC3 -010	40	1	139	64	46	542	0.20
SC3 -015	60	1-1/4	139	86	51	929	0.30
SC3 -020	80	1-1/2	168	86	60	1161	0.35
SC3 -030	120	1-1/2	200	86	60	1393	0.40
SC3 -040	160	2	235	100	70	1806	0.55
SC3 -050	200	2	260	100	70	2032	0.60
SC3 -075	300	2-1/2	211	150	90	2787	0.85
SC3 -100	400	3	272	150	100	3677	1.00
SC3 -150	600	3	345	150	100	4838	1.25

MODEL CODE : ASSEMBLY

SC3	-010	-**	-**	-**
SERIES	SIZE	PORT THDS. OPTIONAL #	MICRONS. OPTIONAL #	FEATURE. SPECIAL #
		BSPP - STD	149-SS 100 MESH (STD)	RB3 - BY PASS VALVE (OPTIONAL)
		NPT - OPTIONAL	125/ 74 / 63 -OPTIONAL	

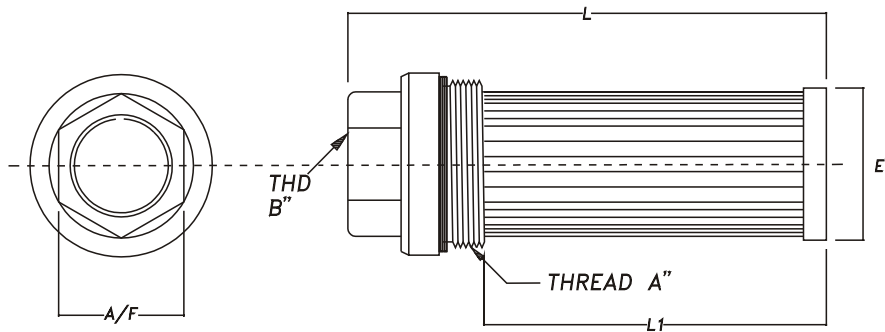
OMIT IF STANDARAD

CONSULT FACTORY, FOR OPTIONAL / SPECIAL FEATURE

TANK MOUNTED SERIES



- TANK MOUNTED REUSABLE STRAINER
- SIDE WALL OR TANK TOP MOUNTING
- FLOWS TO 40 GPM (160 LPM)
- STAINLESS STEEL PLEATED MEDIA
- 100 MESH (149 MICRON) STANDARD
- DIE CAST ALUMINIUM BUSHING



Series	Bushing Size Dim. A x Dim. B UN (2A) X UN (2B)	LPM / GPM Rating	Screen Area SQ. IN.	Dimensions			
				L	L1	E	A / F
TMA - 16	2-1/2" -12 x 1 - 5/16" - 12	40 / 10	90	230	194	57	54
TMA - 20	2-1/2" -12 x 1 - 5/8" - 12	60 / 15	90	230	194	57	54
TMA - 24	3-3/8" -12 x 1 - 7/8" - 12	120 / 30	230	225	185	78	65
TMA - 32	3-3/8" -12 x 2 - 1/2" - 12	160 / 40	230	235	196	78	76

MODEL CODE : ASSEMBLY

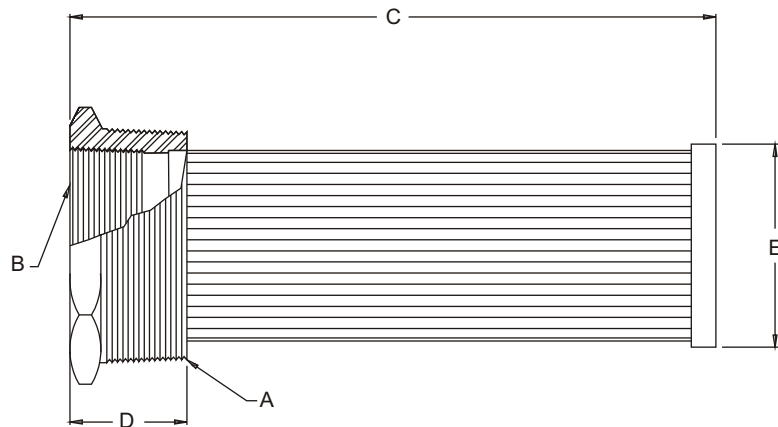
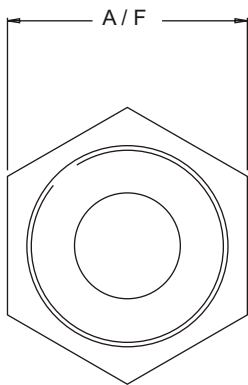
TMA	- 16	- ***	- 149	- RB3
SERIES	SIZE	SAE STD THD 'A' THD 'B'	μ.MICRONS	OPTIONAL
TMA	16	32S - 16S	149 - STD	RB3 - 3 P.S.I. BYPASS VALVE (OMIT IF NOT REQD.)
	20	32S - 20S	(OMIT IF STD).	
	24	48S - 24S	OTHER RATING	
	32	48S - 32S	(OPTIONAL)	

CONTACT FACTORY FOR OPTIONAL FEATURE

DIMENSIONS IN MM FOR REFERENCE ONLY

TANK MOUNTED SERIES

- TANK MOUNTED REUSABLE STRAINER
- SIDE WALL OR TANK TOP MOUNTING
- FLOWS TO 100 GPM (400 LPM)
- STAINLESS STEEL PLEATED MEDIA
- 100 MESH (149 MICRON) STANDARD
- M.S. / C.I. BUSHING



Series	Bushing Size Dim. A x Dim. B N.P.T	LPM / GPM Rating	Screen Area SQ. IN.	Dimensions			
				C	D	E	A / F
TMS - 005	1" x 1 / 2"	20 / 5	35	137	28	28	38
TMS - 010	1 - 1 / 4" x 3 / 4"	40 / 10	64	190	31	36	46
TMS - 015	1 - 1 / 2" x 1"	60 / 15	86	210	33	42	50
TMS - 025	2" x 1 - 1 / 4"	100 / 25	125	254	33	54	65
TMS - 050	3" x 2"	200 / 50	260	260	43	78	82
TMS - 100	4" x 3"	400 / 100	315	287	46	96	118
TMS - 200	6" x 4"	800 / 200	450	316	58	145	144

MODEL CODE : ASSEMBLY

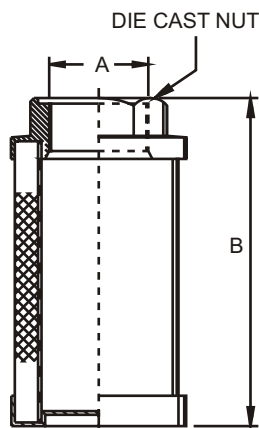
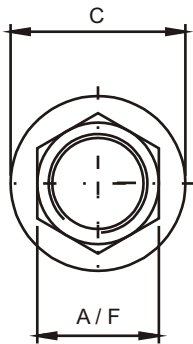
TMS	- 005	- ***	- 149	- RB3
SERIES	SIZE	NPT THD NORMS THD 'A' THD 'B'	μMICRONS	OPTIONAL
TMS	005	08N 04N	149 - STD (OMIT IF STD). OTHER RATING (OPTIONAL)	RB3 - 3 P.S.I. BYPASS VALVE (OMIT IF NOT REQD.)
	010	10N 06N		
	015	12N 08N		
	025	16N 10N		
	050	24N 16N		
	100	32N 24N		
	200	48N 32N		

CONTACT FACTORY FOR OPTIONAL FEATURE

DIMENSIONS IN MM FOR REFERENCE ONLY

SUCTION STRAINER

- REUSABLE SS 100 MESH / 149 MICRON STD.
- ALUMINIUM DIE CAST NUT
- STEEL CAP / SUPPORT TUBE
- CONTINUOUS EPOXY BOND
- MAX. WORKING TEMP. 80° C.
- SUITABLE FOR HYDRAULIC / MINERAL OIL



MODEL NO	FLOW LPM	THREAD IN. BSPP A	OVERALL LENGTH B	DIA NUT CAP C	NUT A/F	SCREEN AREA (SQ. CMS)	WT KGS
SC3 -002	8	1/4	90	46	24	187	0.10
SC3 -003	12	3/8	90	46	24	187	0.10
SC3 -005	20	1/2	105	46	30	226	0.10
SC3 -007	28	3/4	109	64	35	406	0.20
SC3 -010	40	1	139	64	46	542	0.20
SC3 -015	60	1-1/4	139	86	51	929	0.30
SC3 -020	80	1-1/2	168	86	60	1161	0.35
SC3 -030	120	1-1/2	200	86	60	1393	0.40
SC3 -040	160	2	235	100	70	1806	0.55
SC3 -050	200	2	260	100	70	2032	0.60
SC3 -075	300	2-1/2	211	150	90	2787	0.85
SC3 -100	400	3	272	150	100	3677	1.00
SC3 -150	600	3	345	150	100	4838	1.25

MODEL CODE : ASSEMBLY

SC3	-010	-**	-**	-**
SERIES	SIZE	PORT THDS. OPTIONAL #	MICRONS. OPTIONAL #	FEATURE. SPECIAL #
		BSPP - STD	149-SS 100 MESH (STD)	RB3 - BY PASS VALVE (OPTIONAL)
		NPT - OPTIONAL	125/ 74 / 63 -OPTIONAL	

OMIT IF STANDARAD

CONSULT FACTORY, FOR OPTIONAL / SPECIAL FEATURE