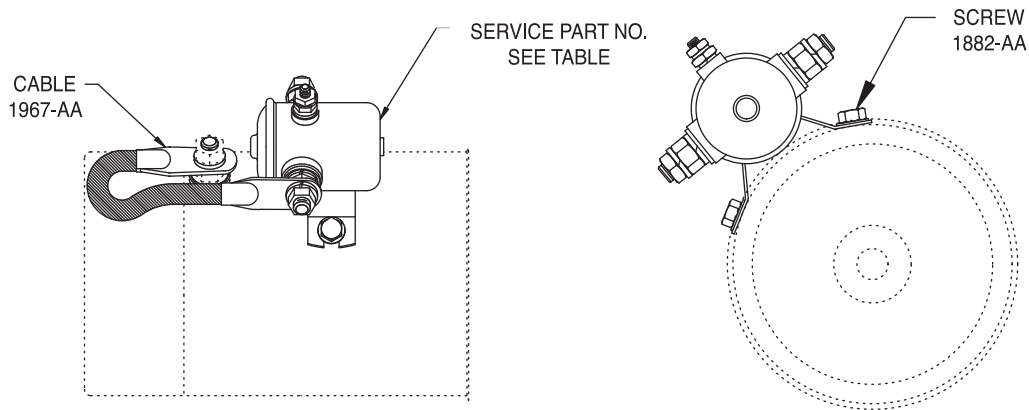
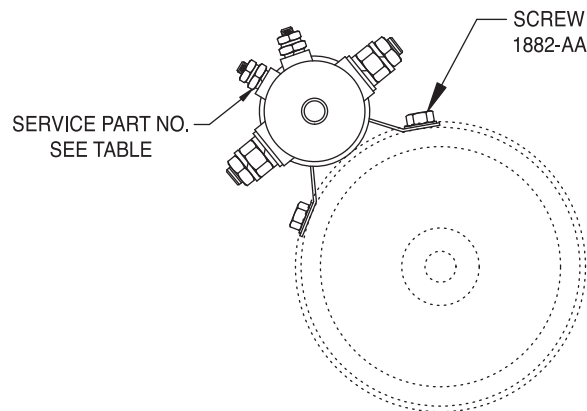


KS1-4

# INTERMITTENT DUTY START SOLENOIDS



**Figure 1 Internal Ground**



**Figure 2 External Ground**

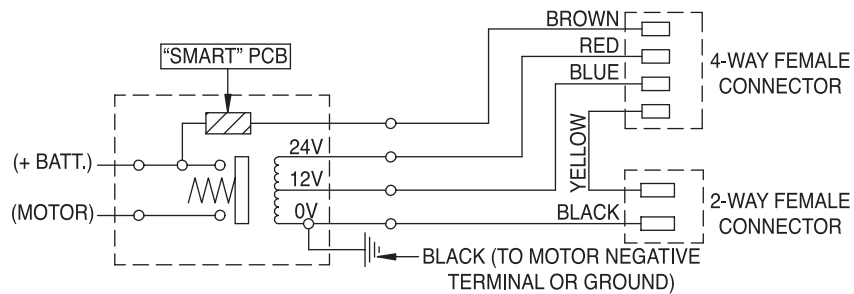
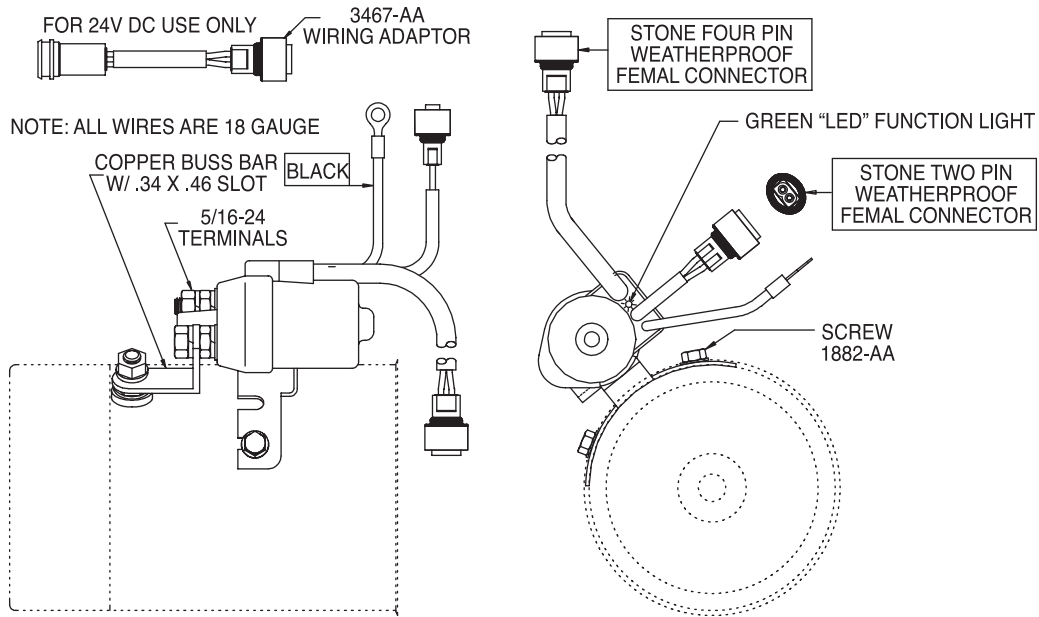
KIT NO.	VOLTAGE	SERVICE P/N	CONFIGURATION	UL RECOGNIZED
KS1	12 VDC	2145-AA	FIG. 1	NO
KS2	24 VDC	2151-AA	FIG. 1	NO
KS3	12 VDC	1866-CA	FIG. 2	YES
KS4	24 VDC	2150-AA	FIG. 2	YES

**Note:** Stone uses a network of qualified suppliers to ensure availability. There are minor dimensional and cosmetic differences between vendor's products.

For mounting to 3.0" motors, order KS\_ and K-104.

For flexibility of mounting position on 4.5" motors, order KS\_ and K-105 (band clamp kit) K-217 for KMP2, 5 and KMD8.

# SMART START SOLENOIDS INTERMITTENT DUTY



Rated for use up to 300 amps (intermittent), completely sealed construction eliminates need for circuit breakers, fuses or microswitches, dual voltage- 12 and 24 VDC, non-weldable contacts, interchangeable with current designs, neat one-plug wiring harness, terminals can not be over-tightened, covers single and double terminal applications, waterproofed to IP67, electronics suitable for use in ambient temperatures between -40° F(-40° C) and 185° F (86° C), world patents applied for.

Order with handset KG11A, KG12A, & KG13A.

For 24VDC, use 3467-AA wiring adaptor.

## HEAVY DUTY METAL CASE SOLENOID SWITCH 200 AMPS 24VDC SPST-NO

AMETEK/Prestolite Switch SAS Solenoid Switches are designed to switch inductive loads in DC circuits up to 36 volts. This metal-enclosed switch employs a moving contact disk for high performance at an economical price, and is suitable for use with a wide variety of DC traction and hydraulic pump motors.

### CONSTRUCTION

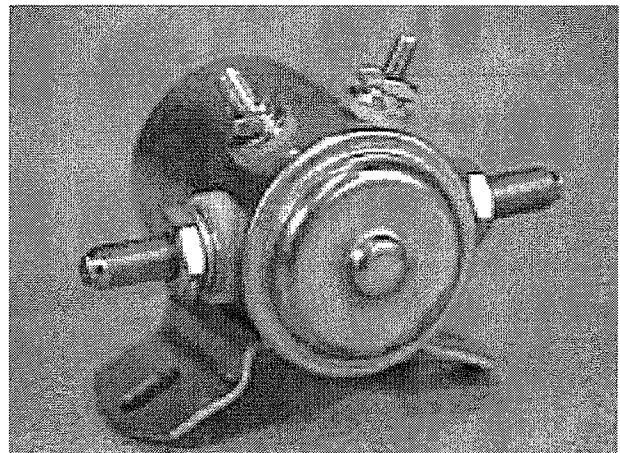
Case/Bracket Material	0.065 In Steel
Mounting Brackets	Curved (2.22 In Rad)
Case/Bracket Plating	Clear Zinc
Mounting Provisions	0.28 X 0.46 In Slots
Mounting Centers	56 Deg
Weight	16 Oz

### COIL

Nominal Voltage	24 VDC
Duty	Continuous (100%)
Maximum "On" Time	N/A
Pickup Voltage (Max)	18.0 VDC
Dropout Voltage (Max)	8.5 VDC
Resistance (@ 25 Deg C)	54 Ohms
Current	0.44 Amps
Power	11 Watts
Terminal Material	Stainless Steel
Terminal Size	(2) #10 – 32 x 0.26
Maximum Torque	20 In-Lb

### CONTACTS

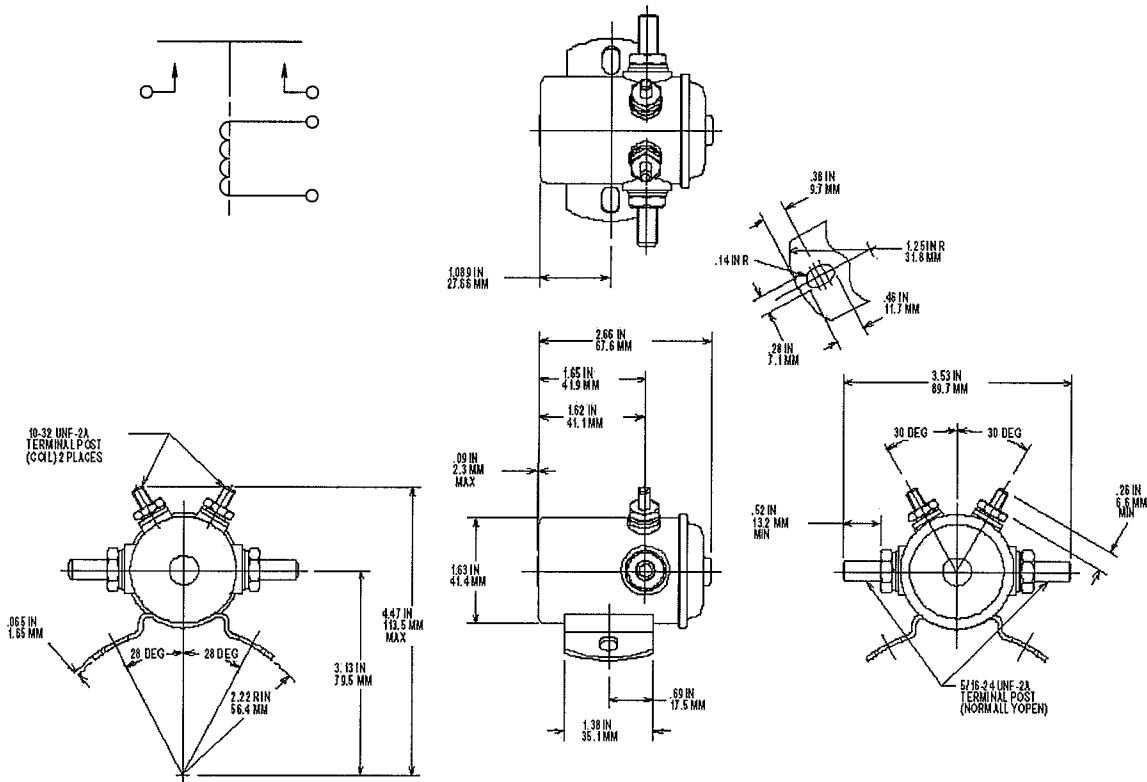
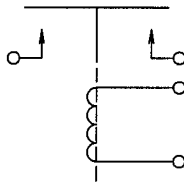
Configuration	SPST-NO
Voltage	24 VDC
Continuous Current Rating	200 Amps
Inrush Current	900 Amps
Break Current	250 Amps
Typical Voltage Drop (@ 50A)	100 mV
Electrical Life	50,000 Cycles
Contact Disk Material	Copper Alloy
Contact Disk Plating	None
Stationary Contact Material	Silver Alloy
Terminal Material	Copper
Terminal Size	(2) 5/16 – 24 x 0.40
Maximum Torque	40 In-Lb



# Dimensions SAS-5401B

Approximate Dimensions Only - Not to Be Used for Design or Construction

## Wiring Diagram



AMETEK/Prestolite Switch, US Office  
2220 Corporate Drive, Troy, Ohio 45373  
OEM Sales (937) 440-0843 Fax: (937) 440-0881  
Aftermarket Sales 866-879-3204 Fax: 866-879-3205  
E-Mail: orders.prestoliteswitch@ametek.com

AMETEK/Prestolite Switch, International Sales  
Ipswich Road, Cardiff CF239XP, Wales, UK  
44 (0) 29 2049 6763 Fax: 44 (0) 29 2046 2337  
E-Mail: cardiff@prestolite.co.uk