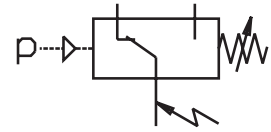


- Piston sensing system with soft sealing
- Leakage free
- Mechanical service life 10 millions of switching operations
- Micro switches UL and approved
- Silver plated contacts in micro switch
- Basic model for flange mounting



Functional Description

Pressure switch consists of an aluminum housing, a piston, a prestressed spring and a microswitch. When the pressure corresponding with the spring setting is reached, the switch closes or opens the respective electric circuit.

The pressure switch is being supplied with a connector and with two bolts.

When delivered with a sandwich plate, the switch can be turned around its length axes by 90°.

The subplate can be ordered separately or with the switch.

Ordering Code

TS2 - -

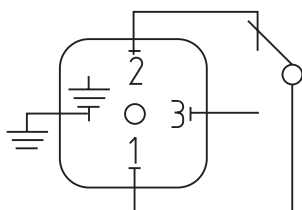
Pressure switch

Type of subplate

0 without subplate
1 subplate type DP3-TS2-1 G1/4
3 subplate type DP3-TS2-3 SAE 6

Pressure range

18 Adjustable pressure 5... 180 bar
35 Adjustable pressure 50... 350 bar



Switching function:

One single-pole micro switch (change-over switch)

The pressure increase closes contacts on terminals 1 - 3 and opens contacts on terminals 1 - 2

Technical Data

Switching pressure ranges	bar	5 ... 180	50...350
Switching pressure at the range beginning difference ca. ¹⁾ at the range end	bar	8 16	6 25
Limit value ²⁾	bar	250	600
Adjustable range (Falling pressure)	bar	3 ... 160	40 ... 300
Adjustable range (Rising pressure)	bar	5 ... 180	50 ... 350
Max. Hysteresis (At the end of the range)	%	15	
Number of switching max.	1/min	60	
Material of the housing	Aluminium 230		
Materials in the sensing element	Stainless Steel, Turcon and NBR		
Viscosity range	mm ² /s	up to 1000	
Repeatability	%	± 1 from range end value ³⁾	
Electrical connection	plug connector to DIN 43 650		
Switching element	micro switch		
Hydraulic fluid	Hydraulic oils of power classes HM, HV to CETOP - - RP91H in viscosity classes ISO VG 32, 46 and 68.		
Ambient temperature range	°C	-40 ... +80	
Max. temperature at the switching element	°C	+80	
Maximum degree of fluid contamination	Class 21/18/15 to ISO 4406 (1999).		
Max. vibration	g	15	
Mounting position	optional		
Weight	kg	0.350	

1) Operating data at 3.5 million switching operations.

2) Also short pressure peaks during the operation must not exceed this limit value.
Limit value corresponds with the max. testing pressure.

3) Related to pressure control at constant fluid and ambient conditions.

Electric Data of the Microswitch

Enclosure type	IP 65 (Connector DIN 43 650 A, Pg9)		
Voltage max.	V	250 AC	
Current max.	A	5	
Silver plated contacts			
Voltage	Inductive endurance	Resistance endurance	
30 V	3,0 A	4,0 A	
250 V	0,2 A	0,2 A	
250 V~	2,0 A	3,0 A	
125 V~	3,0 A	5,0 A	

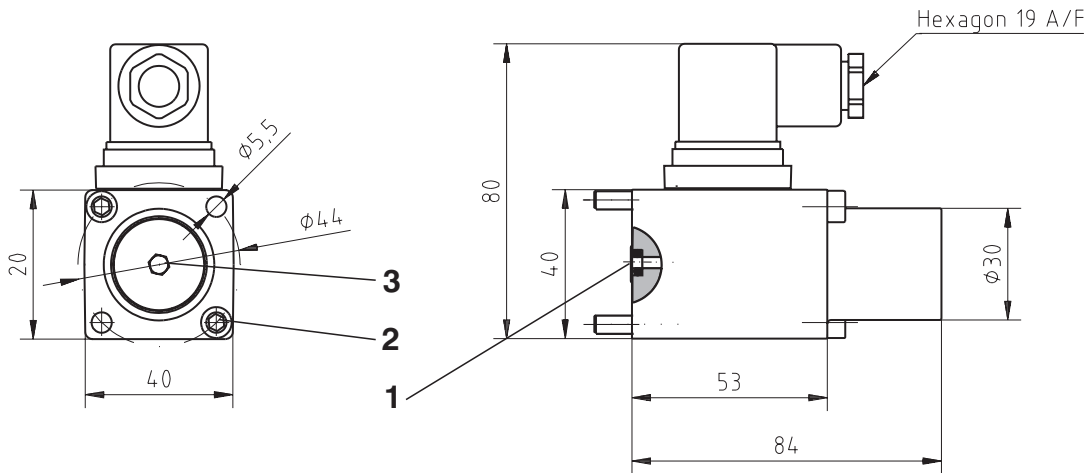
Minimum endurance 160 mA by 5 V DC

Pressure Switch Dimensions

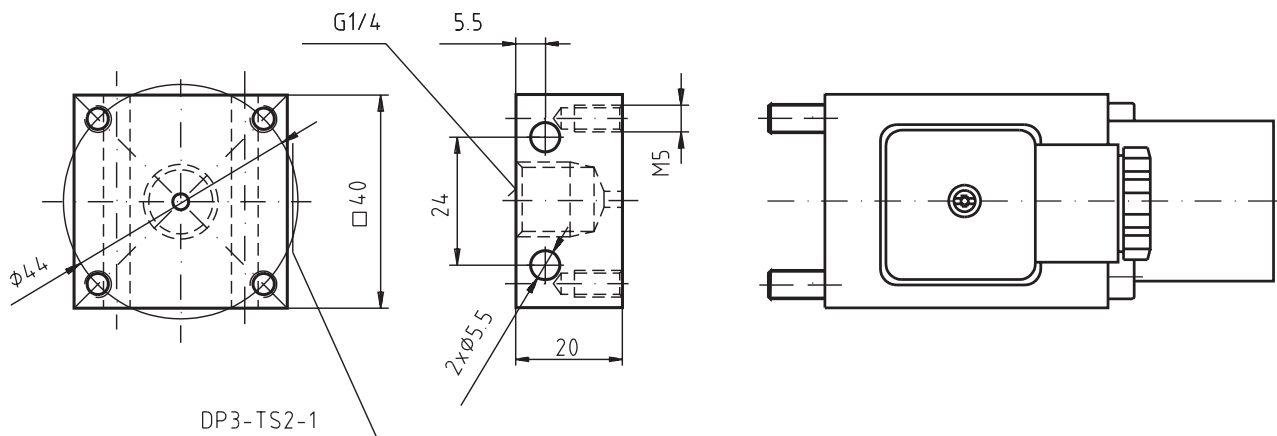
Dimensions in millimetres

Model TS2 - XX - 0

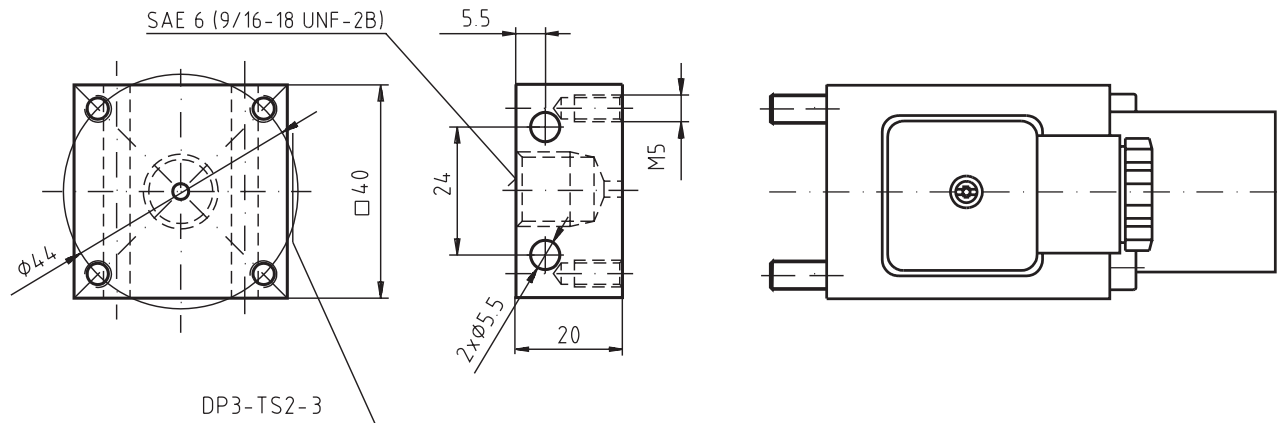
- 1 O-ring 8 x 1 supplied with each switch
- 2 2 mounting bolts M5x60 (tightening torque 5 Nm) supplied with each switch
- 3 Setting of the switch point (inside hexagon 5 mm)



Model TS2 - XX - 1



Model TS2 - XX - 3



Ordering Code of Sandwich Plates

MTS2 - /

Sandwich plate of the pressure switch

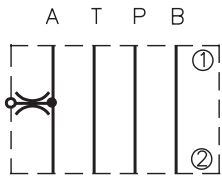
Nominal size of the sandwich plate

06	06
10	10

A
B
C
P

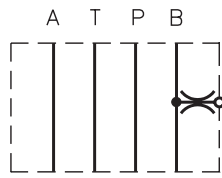
Model
connection in port A
connection in port B
connections in ports A and B
connection in port P

Models of sandwich plates size 06



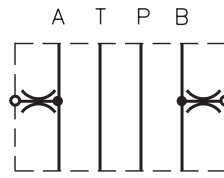
(A) (T) (P) (B)

MTS2-06/A



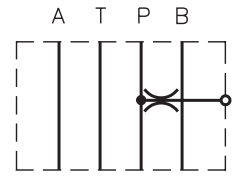
(A) (T) (P) (B)

MTS2-06/B



(A) (T) (P) (B)

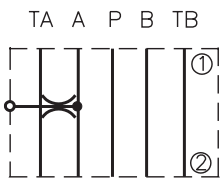
MTS2-06/C



(A) (T) (P) (B)

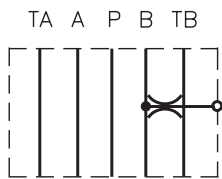
MTS2-06/P

Models of sandwich plates size 10



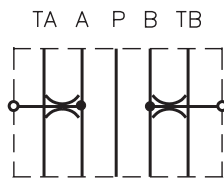
(TA)(A)(P)(B)(TB)

MTS2-10/A



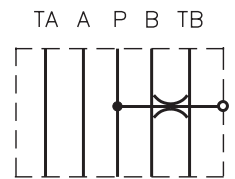
(TA)(A)(P)(B)(TB)

MTS2-10/B



(TA)(A)(P)(B)(TB)

MTS2-10/C



(TA)(A)(P)(B)(TB)

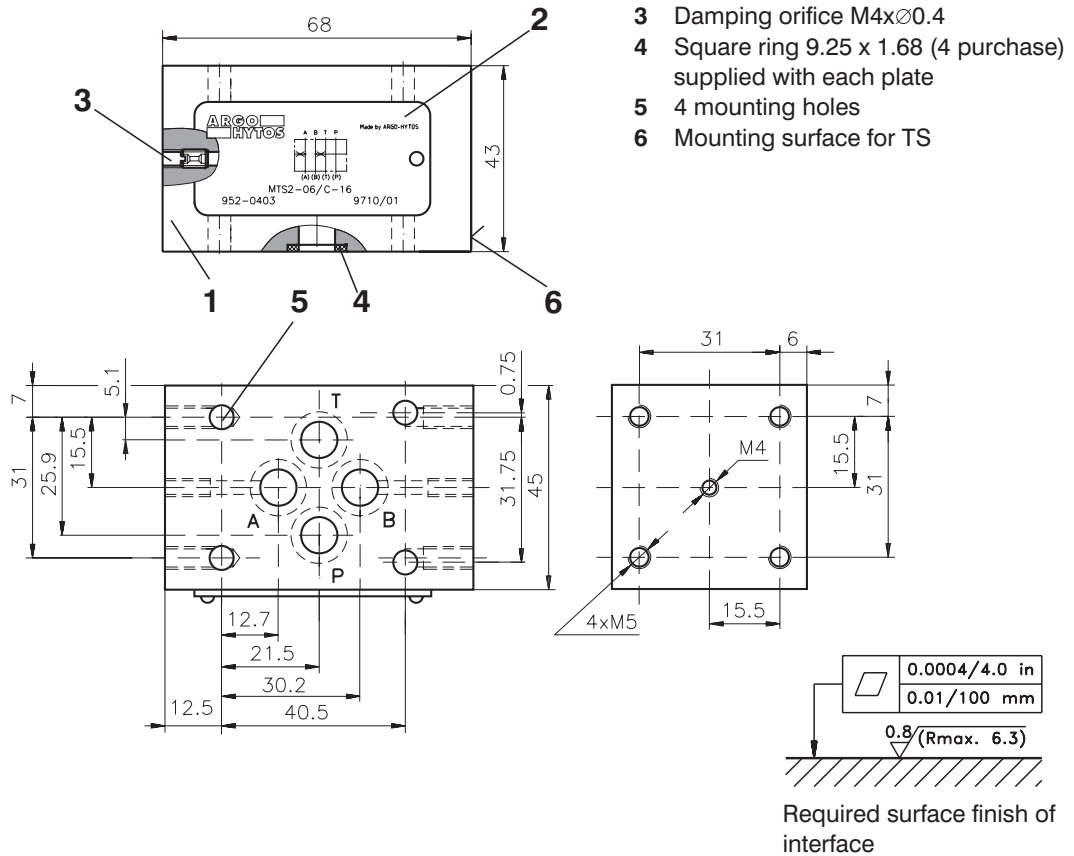
MTS2-10/P

- ① valve side
- ② subplate side

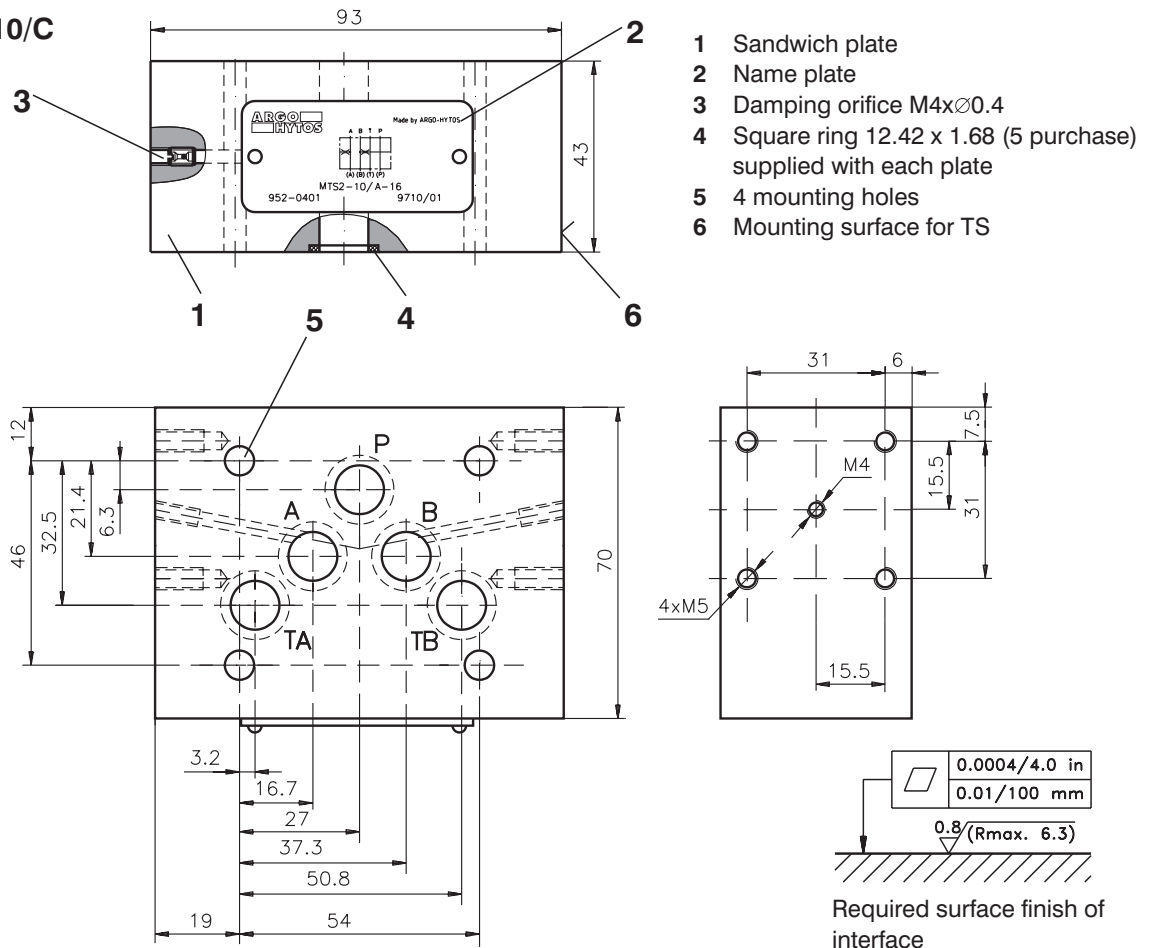
Sandwich Plate Dimensions

Dimensions in millimetres

MTS2 - 06/C

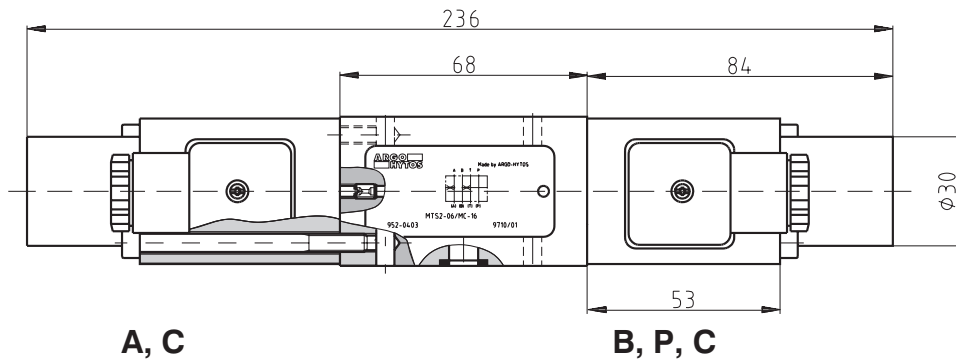


MTS2 - 10/C

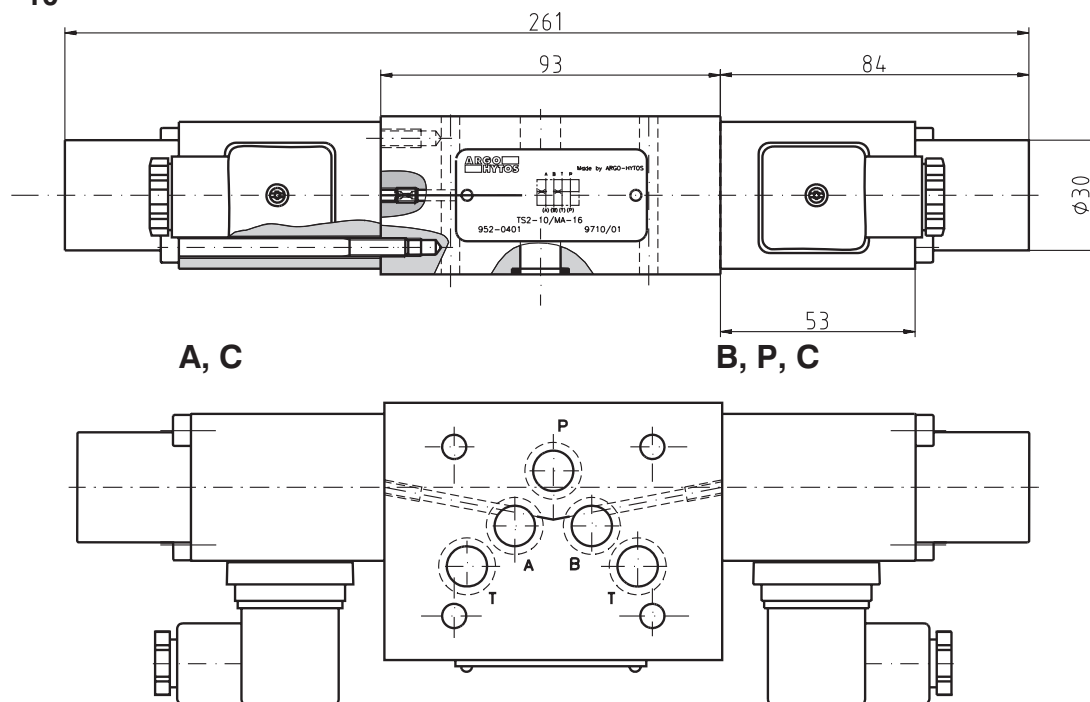


Mounting Instructions for MTS2

MTS2 - 06



MTS2 - 10



Caution!

- The packing foil is recyclable.
- The technical information regarding the product presented in this catalogue is for descriptive purposes only. It should not be construed in any case as a guaranteed representation of the product properties in the sense of the law.

ARGO-HYTOS a. s. CZ - 543 15 Vrchlabí
 Tel.: +420-499-403111, Fax: +420-499-403421
 E-mail: sales.cz@argo-hytos.com
 www.argo-hytos.com