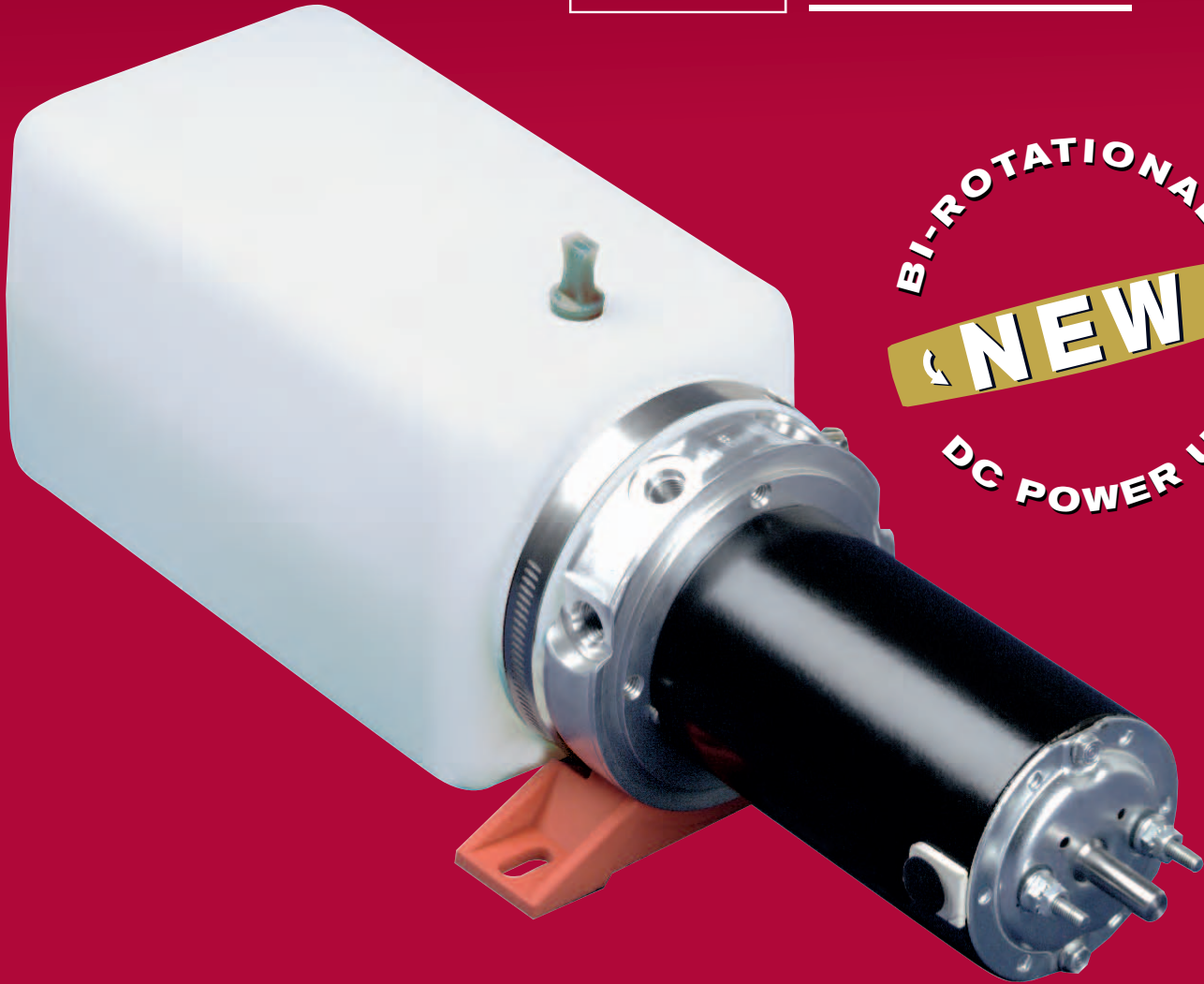


SPX **SMITHS**



BI-ROTATIONAL
NEW
DC POWER UNIT



Model SMR

Development | Engineering | Manufacturing | OEM Support | Customer Service

*Unique filler/breather
allows for vertical or
horizontal mounting*

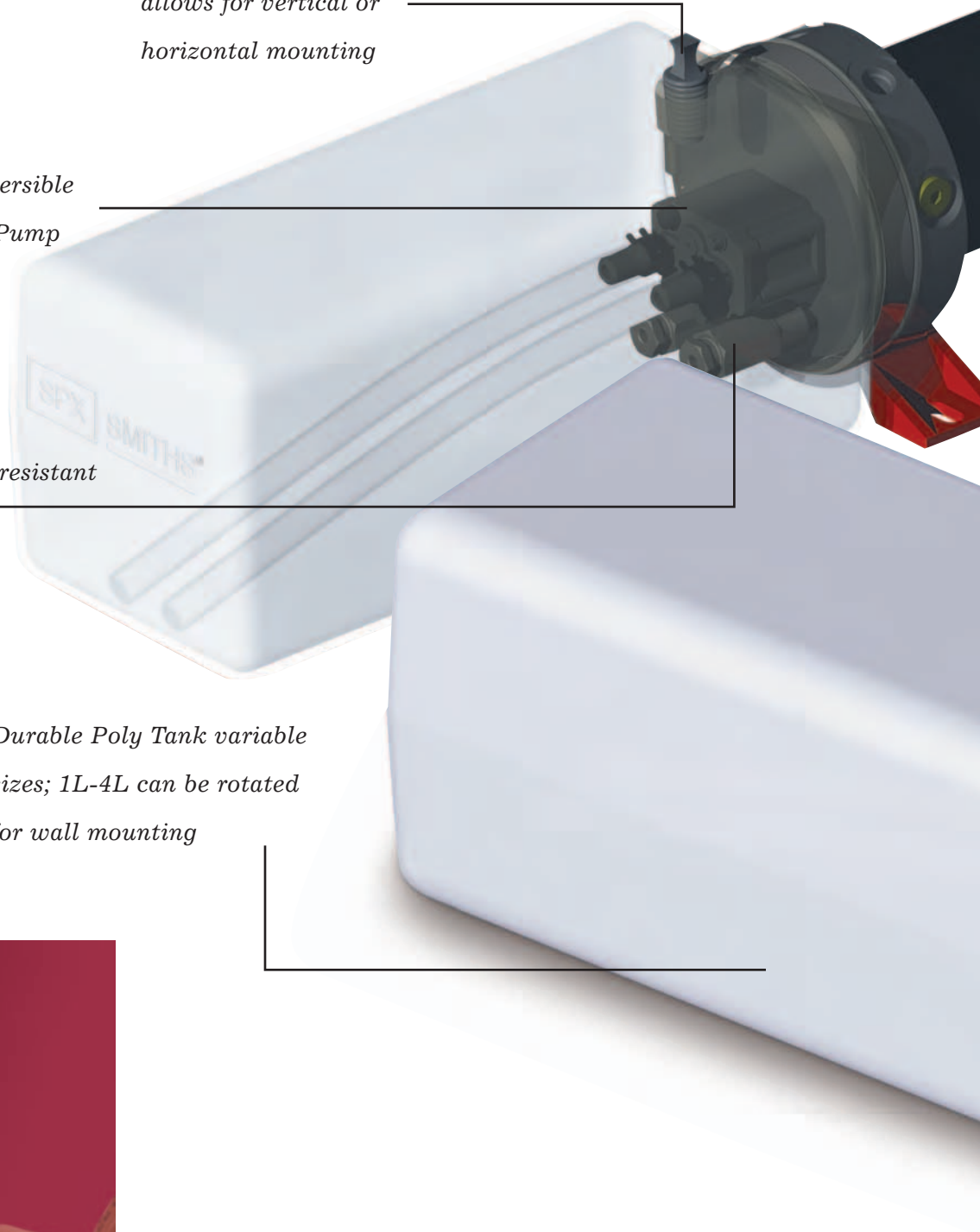
*Proven reversible
hydraulic Pump*

*Fixed internal tamper-resistant
relief valves*

*Durable Poly Tank variable
sizes; 1L-4L can be rotated
for wall mounting*

Engineering

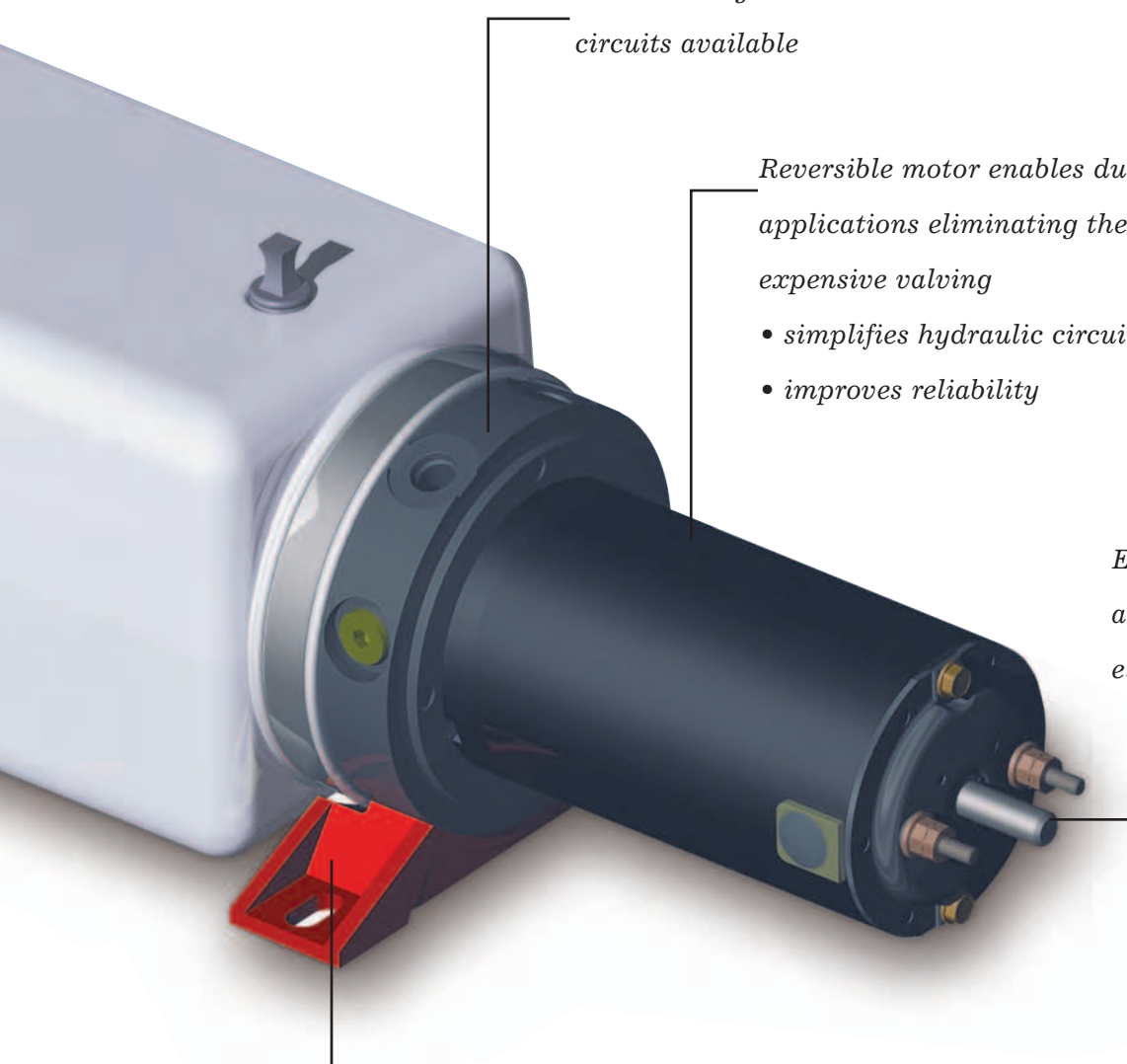
FEATURES





SPX Smiths is a new brand from a manufacturer you can trust, SPX Fluid Power. SPX Fluid Power Manufactures several name brands that are leaders in the Fluid Power Industry,— including Power Team High pressure hydraulic tools and cylinders, Stone Premium compact hydraulic

power units, Globe Radial Piston air motors, and Hytec hydraulic workholding products. The SPX Smiths Brand serves the economy compact hydraulic market segment with a product concept that is designed from the ground up with a cost efficient design and components that deliver value.



Load holding and non-load circuits available

Reversible motor enables dual acting applications eliminating the need for expensive valving

- *simplifies hydraulic circuit*
- *improves reliability*

Emergency override shaft allows for direct coupling to electric/battery power drills

Durable mounting bracket designed for easy installation

How to Order



Distribution



Lab Testing



Manufacturing

SMR - 1.0 27 - L 2 S

SMITHS
REVERSIBLE

Flow

1.0

1.0 gpm
(3.8 l/min)
@ 1500 psi
(See Performance Chart)

Relief Pressure

27	2700 PSI (186 Bar) (Relief)
	2500 PSI (170 Bar) (Working)
20	2000 PSI (138 Bar) (Relief)
	1800 PSI (124 Bar) (Working)
15	1500 PSI (103 Bar) (Relief)
	1300 PSI (89 Bar) (Working)
10	1000 PSI (68 Bar) (Relief)
	800 PSI (55 Bar) (Working)

Valving

N	None
	Load Holding Pilot Operated Checks
L	Load Holding Pilot Operated Checks
	Load Holding Pilot Operated Checks

Tank Volume*

1	1 Liter
2	2 Liter
3	3 Liter
4	4 Liter

Porting

B	1/4" BSP (-4)
S	7/16 SAE (#4)

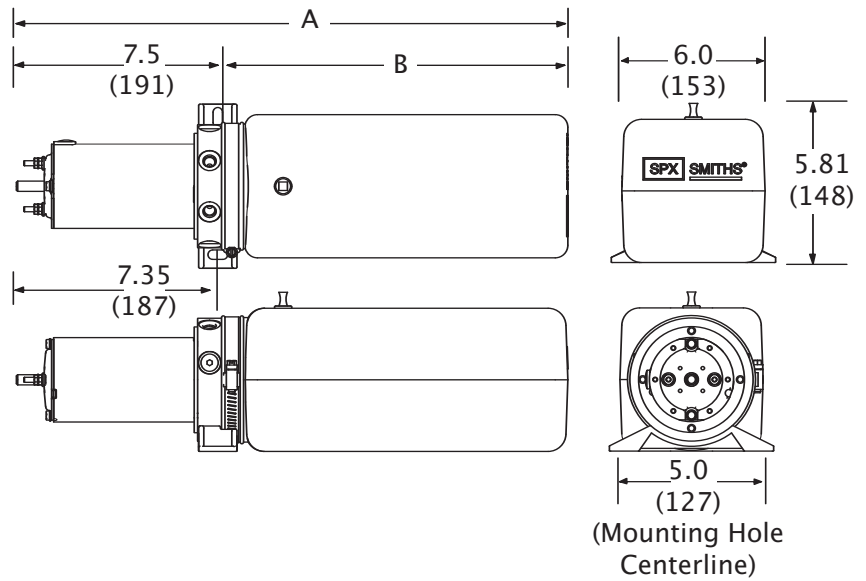
* Accommodates vertical or horizontal orientation

Usable volume; slightly less

DIMENSIONS

Inches (mm)

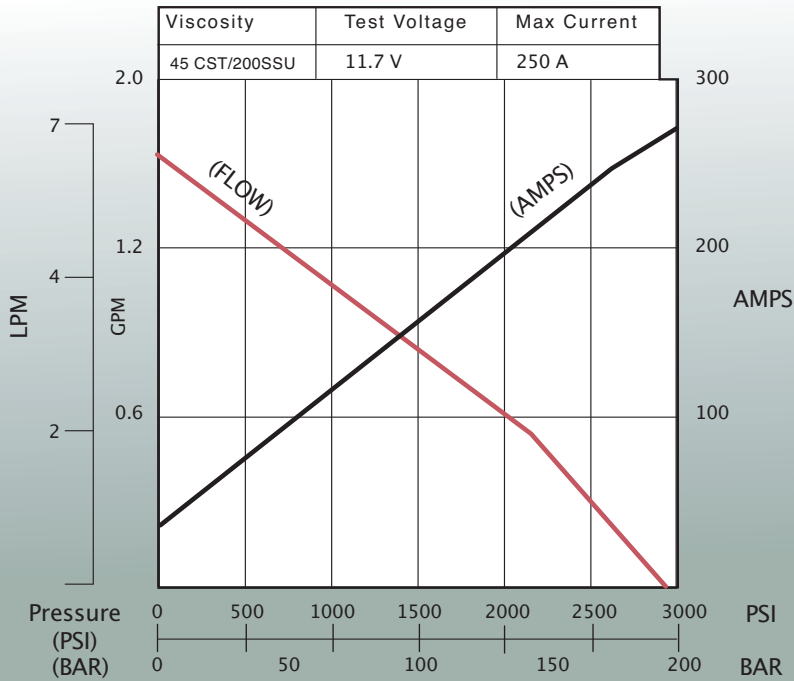
	Motor End To Tank Face Mounting	B Tank Length	A Overall Length
1L	= 7.50 (190) +	5.15 (131)	= 12.64 (321)
2L	= 7.50 (190) +	7.65 (195)	= 15.14 (385)
3L	= 7.50 (190) +	10.15 (258)	= 17.64 (448)
4L	= 7.50 (190) +	12.65 (322)	= 20.14 (512)



(Mounting Hole Centerline)

Specifications Performance

PERFORMANCE CURVE



Typical Performance

1.0 GPM @ 1500 PSI at 11.7VDC & 150 Amps at
45 Centistokes (200 SSU) 2700 PSI Max at no flow

Specifications

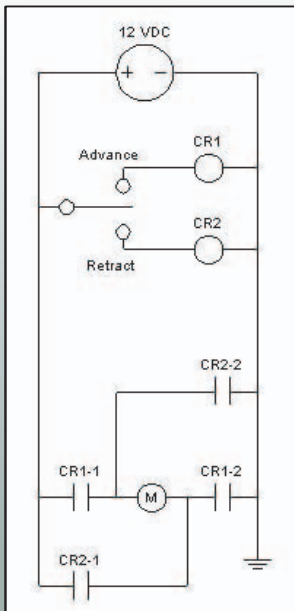
Pressure: 2500 PSI MAX working pressure

Voltage: 12 VDC

Current: 250 A MAX

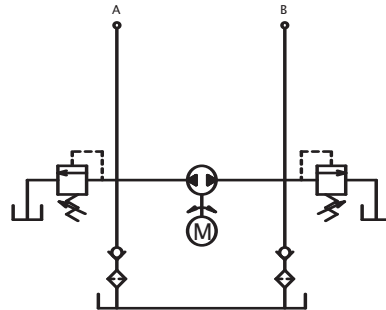
CIRCUIT DIAGRAMS

Electrical Circuit

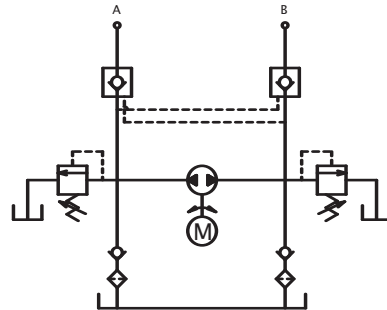


Hydraulic Circuit

Non-Load Holding



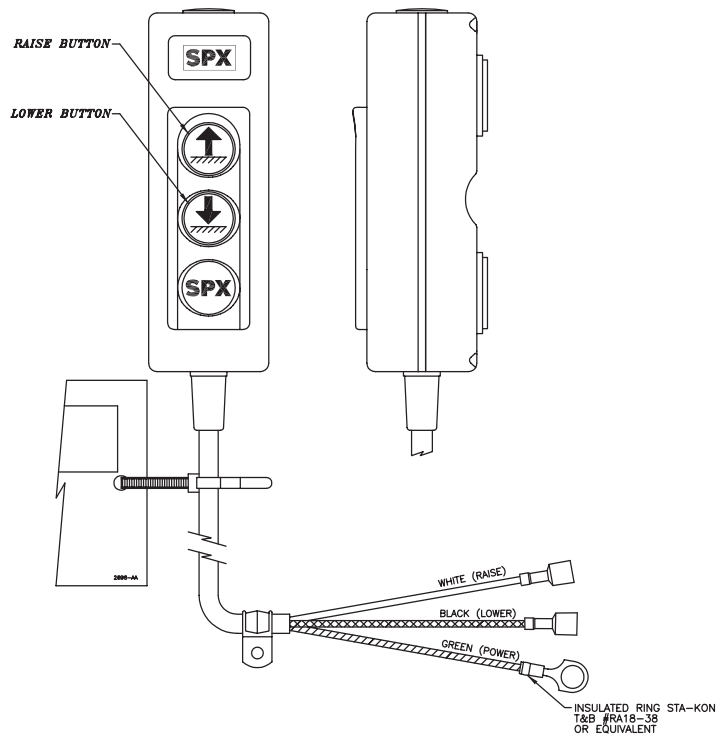
Load Holding (Pilot operated check valves)



Accessories

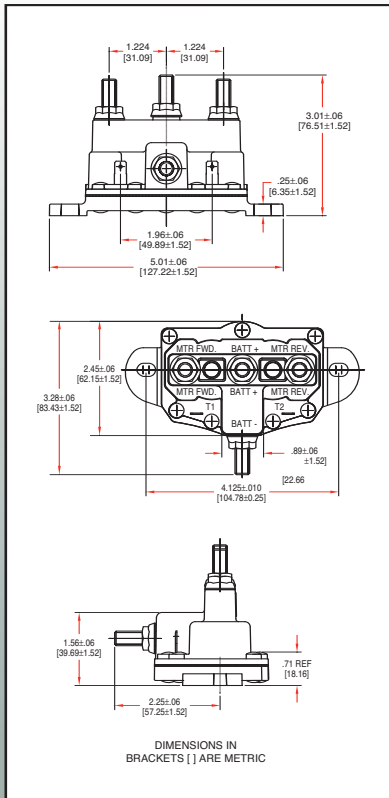
(Sold Separately)

Description	Part Number
Hand Control	3000262
Start Solenoid	2000533



DC Contactor

Reversing Polarity DC Contactor Specifications



12 Volt	
Relay Type:	• Motor reversing with dynamic braking in deenergized state.
Physical Size:	• Approx. 5.0" x 2.45" x 2.05" without terminal projections.
Environmental:	• Operating ambient temperature range: -40° F to 140° F. Relay is dust and splash resistant to oil, gasoline, antifreeze, common cleaning solutions and brake fluids.
Coil Voltage Operating Ratings:	<ul style="list-style-type: none"> • Operating, Nominal: 12 VDC (Nominal Coil Resistance is 5.7 Ohms @ 25° C) • Operating, Min / Max 7.5 VDC - 15 VDC @ 25C Coil Temp • Pull-in, Min @ 25° C Coil Temp: 7.5 VDC • Hold Voltage, Max @ 25° C Coil Temp: 2.5 VDC • Pull-in, Typical, Hot (after 5 minutes continuous operating @ rated voltage @ 25° C Ambient): 10.5 VDC • Hold Voltage, Max, Hot (after 5 minutes operating @ rated Voltage @ 25° C Ambient): 5.0 VDC
Contact Voltage Ratings:	<ul style="list-style-type: none"> • Operating, Nominal: 12 VDC • Operating, Max: 15 VDC
Contact Current Ratings (both contact sets):	<ul style="list-style-type: none"> • 75 Amps carry for 5 minutes Max. • 125 Amps carry for 30 sec. • 150 Amps In Rush¹
Contact(s) Electrical Life Rating, Inductive Load:	• 10,000 cycles @ 150 Amp in Rush ¹ 75 Amp carry (5.0 sec. On, 25 sec. Off)
Max. Sustained Duty Cycle:	• 20%
Max. Sustained On Time:	• 5 minutes ²
Electrical Connection:	• Two Low Current (LC) terminals for two coils, both coils grounded to main battery ground terminal. Four high current (HC) terminals, two for motor and two for battery. HC terminals 5/16-24 studs. Low Current (LC) terminal 1/4" spade terminals.

¹Risetime ≥ 3 milliseconds to 80% of peak inrush with linear decay to run (carry) current ≤ .1 seconds (typical motor load). •
²Nominal coil voltage applied starting from 25° C DC Contactor temperature. Duty Cycle = On Time / (On Time + Off Time).