

# LUKAS® LS 200 EN

## Heavy duty Cutter

The "heavy duty" LUKAS Cutting Tool, designed for extreme jobs.

### Recommended Applications:

- ✓ Road-, railroad-, aircraft-, naval accidents & natural disasters
- ✓ Cuts all known side-impact bars of passenger vehicles
- ✓ Urban rescue operations
- ✓ Disaster management
- ✓ Cutting of metal constructions, vehicle parts, pipes, profiled carbon steel and plates etc.

### Highlights:

- ✓ The ergonomically designed blades pull the material towards the center of motion, where cutting forces are the highest
- ✓ High cutting performance
- ✓ Easy operation through minimum weight and compact design
- ✓ Precise operation with your finger tips in any position
- ✓ Fast opening and closing speeds up the rescue
- ✓ Operators safety features – all moving mechanical parts are covered
- ✓ Re grindable blades
- ✓ Tool fully balanced



Blade opening  
4.8 in. / 122 mm

Round bar  $\varnothing$  1.2 in. / 30 mm



# LUKAS® LS 200 EN

## Heavy duty Cutter



### Technical Data

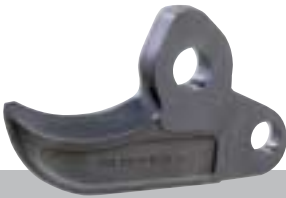
Cutting force up to	88,100 lbs / 392 kN
Round steel material up to dia.*	1.2 in / 30 mm.
Blade opening	4.8 in / 122 mm.
Oil requirement	5.9 cu. in. / 98 cm <sup>3</sup>
Dimensions: l x w x h	26.1 x 7.5 x 6.4 in. 663 x 190 x 163 mm
Weight	11.7 kg / 26 lbs

\*Average hardness of round stock material 400 ... 550 MPa

LUKAS Hydraulic Pumps are set to a system pressure of 630 bar. Acc. to DIN and prEN standard the working pressure can be increased at 10%. If the tools are operated with the increased working pressure (693 bar), also the tool forces would increase by 10 %.

### Useful Accessories

Cutter blades	Weight	4.6 lbs / 2.1 kg
---------------	--------	------------------



### Power Units

CP 100  
GW-4TB  
GO-3T / GO-2 L / GW-2L / GS-2L  
DO-1R  
Motor pumps, Series 6  
TRIMO



**Approved: DIN/TÜV · NFS · NFPA · prEN**