

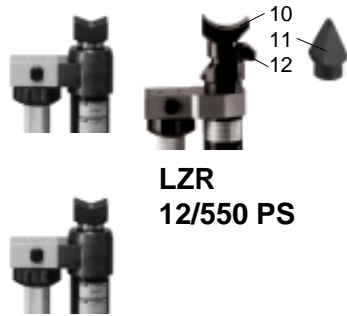
**Operating Instructions
Rescue Tools**

LUKAS



Rescue Ram

**84150/6101-85 GB
Issue 06.2001**

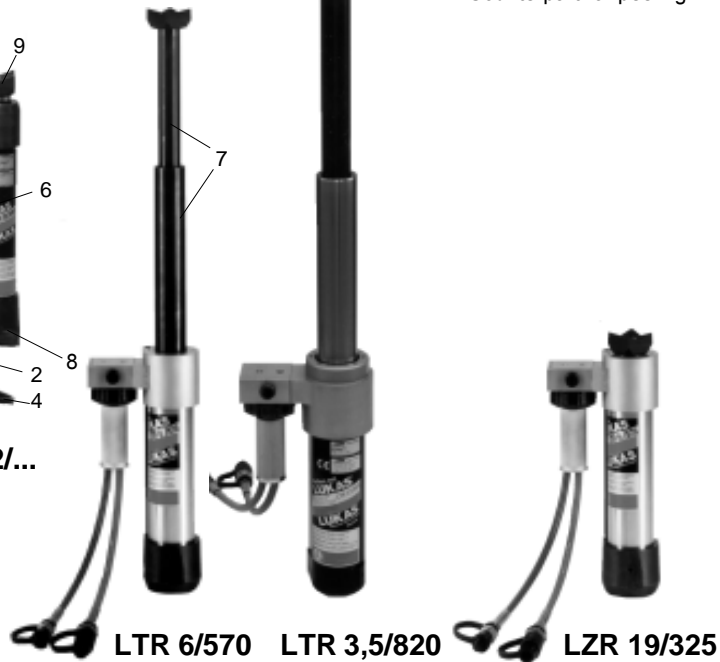


**LZR
12/550 PS**

- 1 Control valve with star ring 1.1
- 2 Hose, black: Pressure
- 3 Hose, blue: Return
- 4 Quick-connect socket StMu 61 - 0
- 5 Quick-connect plug StNi 61 - D
- 6 Hydraulic cylinder
- 7 Piston rod
- 8 Claw, cylinder side
- 9 Claw, piston side
- 10 Peeling tip
- 11 Penetration tip
- 12 Counterpart for peeling



LZR 12/...



LTR 6/570

LTR 3,5/820

LZR 19/325

1 Basic operation and designated use of the machine

1.1 The machine has been built in accordance with state-of-the-art standards and the recognized safety rules. Nevertheless, its use may constitute a risk to life and limb of the user or of third parties, or cause damage to the machine and to other material property.

1.2 The machine must only be used in technically perfect condition in accordance with its designated use and the instructions set out in the operation manual, and only by safety-conscious persons who are fully aware of the risks involved in operating the machine. Any functional disorders, especially those affecting the safety of the machine/plant, should therefore be rectified immediately!

1.3 The machine is exclusively designed for the use described in the operating manual. Using the machine for purposes other than those mentioned in the manual, such as driving and controlling other pneumatic systems, is considered contrary to its designated use. The manufacturer/supplier cannot be held liable for any damage resulting from such use. The risk of such misuse lies entirely with the user.

Operating the machine within the limits of its designated use also involves observing the instructions set out in the operating manual and complying with the inspection and maintenance directives.

2 Organizational measures

2.1 The operating manual must always be at hand at the place of use of the machine!

2.2 In addition to the operating instructions, observe and instruct the user in all other generally applicable legal and other mandatory regulations relevant to accident prevention and environmental protection.

This also applies for wearing protective clothing, helmet with visor or goggles and protective gloves.

2.3 In order to avoid injuries, the machine must only be operated by a specially trained operator who has undergone a safety training.

2.4 Observe all safety instructions and warnings attached to the machine. Make sure that safety instructions and warnings attached to the machine are always complete and perfectly legible.

2.5 Never make any modifications, additions or conversions without the supplier's approval.

2.6 For repairs only genuine LUKAS spare parts, accessories or system components must be used.

2.8 Adhere to prescribed intervals or those specified in the operating manual for routine checks and inspections.

2.9 Make sure to dispose properly of packing material and dismantled parts!

3 General safety instructions

3.1 In the event of malfunctions, stop the machine immediately and lock it. Have any defects rectified immediately.

3.2 Before starting up or setting the machine in motion and during operation of the machine make sure that nobody is at risk.

3.3 Before transporting the machine always check that the accessories have been safely stowed away.

3.4 Make sure that there is enough lighting during work.

3.5 Avoid any operation that might be a risk to machine stability.

3.6 Check the machine at least after every operation for obvious damage and defects. Report any changes (incl. changes in the machine's working behaviour) to the competent organization / person immediately. If necessary, stop the machine immediately and lock it. All lines, hoses and screwed connections have to be checked for leaks and obvious damage. Repair damage immediately. Splashed oil may cause injury and fire.

3.7 All safety equipment has to be checked for completeness and flawless condition:

- instruction markings and warning signs (safety instructions)
- check safety cover (e.g. motor-safety covers, heat protection etc.) if they are available and if they are in good condition.

3.8 Working under loads is not allowed if they are only lifted by hydraulic cylinders. If the work is indispensable sufficient mechanical supports are needed additionally.

4 Instructions for maintenance and service

4.1 For the execution of maintenance and service work, tools and workshop equipment adapted to the task on hand are absolutely indispensable.
Work on the hydraulic system must be carried out only by personnel having special knowledge and experience with hydraulic equipment.

4.2 Before putting into operation clean the machine, especially connections and threaded unions, of any traces of oil, fuel or preservatives before carrying out maintenance/repair. Never use aggressive detergents. Use lint-free cleaning rags and pay attention that the components are meticulously clean during reassembling after repair.

4.3 During dismantling of machines it is necessary to collect the outrunning hydraulic liquids completely, so that they cannot reach the ground. They have to be disposed properly according to the instructions.

4.4 Always tighten any screwed and thread connections that have been loosened during maintenance and repair. Observe the stipulated torques.

4.7 Aggressive material (acid, lye, solvent, vapour) can damage the machine. It is necessary to clean the whole machine if it must be exceptionally operated under such conditions or gets into touch with these materials. Additionally, the machine must be checked as described under 3.6.

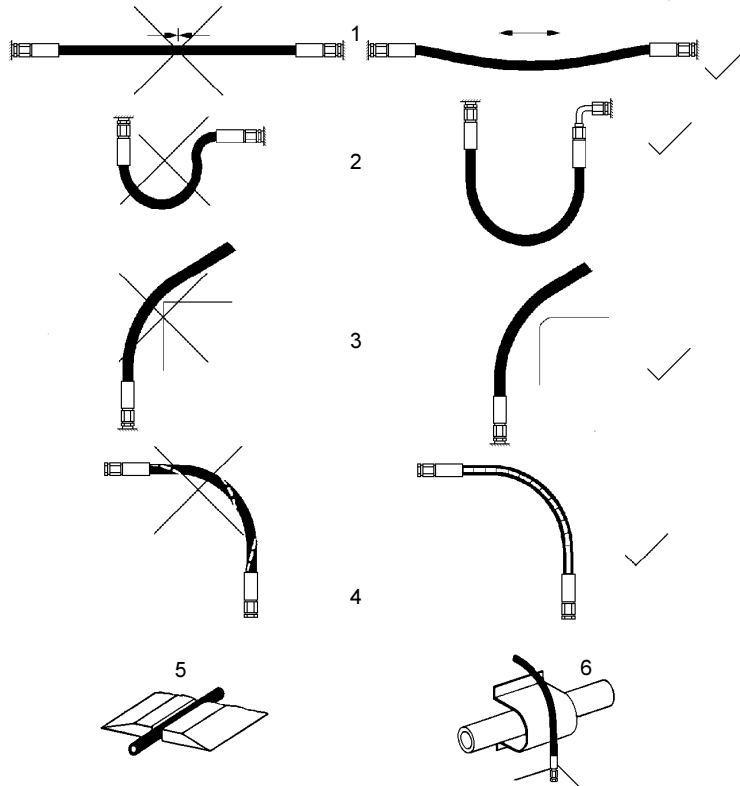
5 Safety Instructions for Hydraulic Hoses



- ***by no means the hose must be exposed to brake fluid*** as this fluid will destroy outer layer of hose
- do not expose the hose to any of the following aggressive fluids:
 - acid, lye or solvent
 - alcohol and fuel
 - battery and automatic transmission fluid

- phosphate ester

Clean hose immediately with water and detergent when it was exposed to such fluids.



5.1 Handling of hoses

- never exceed the permissible working pressure as stated on hose and/or literature
- avoid any tension (see figure 1) and do not hang any load onto the hose
- never exceed the minimum bend radius as resulting kink will cause failure of hose (see figure 2)
- do not allow hose to contact sharp edges or rough objects (see figure 3)
- avoid any twisting of hose (see figure 4)
- do not run over hose with any vehicle or equipment ! Hoses which are put on the surface of sidewalk or street have to be suitably protected (see figure 5)
- do not allow hose to contact areas of high temperature such as mufflers, exhaust manifold, heaters or burners. Protect the hose as shown in figure 6 or install it in sufficient distance from the source of heat.
- never interline hose with that of a different manufacturer

5.2 Protection of the working area in case of breakdown of hoses

Hoses have to be installed or protected in such a way that dangers are prevented, if possible, in case of breakdown of the hoses.

Danger can be caused by:

- Uncontrolled hose movement after a hose rupture caused e.g. by external influence.
- Emerging of the pressure medium under pressure.
- Inflammation of pressure medium near igniting sources

Dangers can be prevented by e.g. protective coverings or shieldings

5.2.1 Do not go near leaks!

- High pressure oil easily punctures skin causing **serious injury**, gangrene or death!
- If injured, **seek emergency medical help!** Immediate surgery is required to remove oil!
- Do not use finger or skin to check for leaks!
- Lower load or relieve hydraulic pressure before loosening fittings!



5.3 Storage of hoses

- Hoses are subject to a natural aging even if they are stored correctly. Therefore, their storage and service time is limited.

When storing the hoses please observe the following:

- Store them cool, dry and dustless (eventually wrapped with plastics sheeting); prevent direct solar radiation and UV rays; shield heat sources which are near the hoses.
- Do not use any ozone producing lamps (e.g. fluorescent light sources, mercury-vapor lamp) or electrical devices next to the hoses.
- Hoses have to be stored freely of tension and in a horizontal position. If they are stored in rings the smallest bending radius determined by the manufacturer must not fall below.

5.4 Marking of hoses

- The hose is marked with the manufacturer's name and quarter/year of production.
- The max. allowable pressure and month/year of production is indicated on the hose end fitting.

5.5 Inspection and replacement intervals of hoses

- **After each operation the hoses have to be checked for external damages, cracks, kinks and bubbles!**
- The operator has to replace the hoses in appropriate period of times, even if there are no visible security defects on the hoses.
- **The hoses have to be replaced 10 years as from date of manufacture at the latest (see marking on the hose)!**
Hoses are subject to a natural aging even if they are stored correctly. Therefore, their storage and service time is limited.
- **Hoses have to be checked by a skilled person before the first putting into operation of the technical device and afterwards at least once a year for their safe working condition.**

A skilled person is somebody having sufficient knowledge concerning hydraulic hoses due to his special training and knowledge. He/she must be acquainted with the local safety working conditions, accident prevention regulations, technical regulations and approved standards (e.g. DIN-Standards), so that he/she is capable to estimate the safety working conditions of the hydraulic hoses.

5.6 Examples for possible defects of hoses

- Damages of the surface and the interior (e.g. chafe marks, cuts or fissures).
- Embrittlement of the surface (fissuration of the hose material).
- Deformations, which are not in accordance with the natural shape of the hoses, in pressureless condition or under pressure or in case of bendings, e.g. separation of material layers, blister formation, squeezing or break spots.
- Leakage points.
- Instructions for installation were not observed.
- Emerging of the hose from the end fittings.
- Damages or deformations of the end fittings which deteriorate the function and stability of the end fittings or the connection between hose and end fitting.
- Corrosion of the end fittings or the metal inlets, which deteriorates the function and stability.
- Storage and operation periods were exceeded.

6 Application

6.1 General

General facts about the rescue rams LZR./... und LTR ./..

These rescue rams have been designed especially for rescue purposes. Their main purpose is to open the gap created by the spreader or the multi purpose tool, because they travel farther than the multi purpose tool.

Locked-in people can be freed by e.g. pushing away the seats or the car front, by pushing up the steering pillar or an indented car roof.

The device is suitable for submerged operation in water up to a depth of 40m.

Before the rescue operation begins, the object to be worked upon must be stabilized. In each country, the country-specific safety regulations must be regarded.

When working in an environment which involves a risk of explosions, do not use motor/engine powered pumps. Instead, use hand pumps.

When operating rescue devices, wear

- protective clothing,
- helmet with visor or goggles,
- protective gloves.

During operation of this rescue device, parts of the object worked on with this device may break away and endanger people standing nearby. Onlookers must be kept at a safety clearance of at least 5m.

The device may be used in environments submerged in **water to a depth of up to 40 m**.

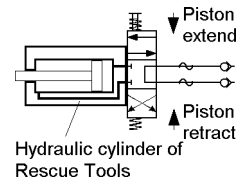
6.2 Function and performance

6.2.1 Description

The rescue rams are designed for double-acting hydraulic rams. Retraction of pistons of the rescue rams is also effected hydraulically.

6.2.2 Connection diagram

For your better understanding the hydraulic diagram is showing in simplified manner the cutter's hydraulic cylinder with control valve.



6.2.3 Type LZR../...

One-stage rams for pushing with constant compressive force over the whole stroke.

6.2.4 Type LTR ../...

Telescopic rams for pushing with different compressive forces in the piston stages and low collapsed height in comparison with the stroke.

6.2.5 Type LZR 12/550 PS

One-stage ram with supplementary operating possibilities (patented)

- for pushing, as 6.2.3
- for piercing an opening (steel up to a thickness of 6mm) when using the **penetration tip** at the piston rod.
- for increasing openings by a special peeling effect which is possible because of the **peeling attachment** (at the piston rod) and the **guiding** at the piston pipe.

6.3 Hydraulic oil supply

6.3.1 LUKAS motor/engine pump or hand pump is used for operating the devices.

6.3.2 Note

If the pump power pack comes from a manufacturer other than LUKAS, it must be ensured that it fulfils the LUKAS specifications, as otherwise dangers may occur for which LUKAS cannot be held liable.

6.3.3 Hoses

The connection between pump power pack and rescue ram unit is normally effected with hoses. If pipes are to be used, please contact LUKAS.

6.4 Control of movements in operation

6.4.1 Tool with control valve (standard version)

With this version the piston rod movement is controlled by the firmly mounted star grip control valve (see cover page item 1.1).

7 Connection of the devices

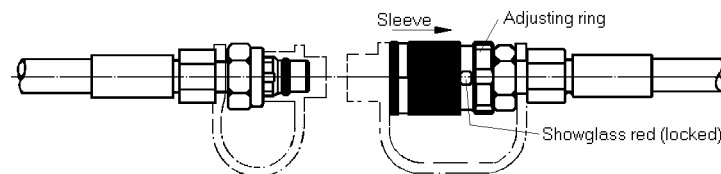
7.1 Hydraulic

Two short hoses (each 0.5 m long) are fitted to the device; they are connected with the pump power pack via a hose pair (5 m / 10 m / 20 m, as is necessary). All hoses are colour marked and have rapid action couplings so that they can be connected without the risk of mix-up:

HP = high pressure —> black R = reflux —> blue

7.2 Connection of the plug-in coupling counterparts for HP and R hoses

The device is connected to the hydraulic pump with the plug-in coupling counterparts (plug and socket), there being no risk of mix-up.



Before coupling, remove the dust protection covers and unlock the connect socket with adjusting ring by turning it. Withdraw the sleeve and connect plug and socket while holding the sleeve in this position. Release the sleeve and set the showglass to „red“ with the adjusting ring. Now the parts are connected and locked. Decoupling is done in the reverse order.

8 Operation

8.1 Preparatory measures

8.1.1 Initial start-up

Before initial start-up and after repairs, the device must be vented:

- Connect the device to the hydraulic pump.
- Fully open and close the device at least twice without load.

8.1.2 Inspection of operating state of the pump power pack

—> See separate Operating Instructions of the power pack (or manual pump) in question.

Note:

Before working on the pump power pack or for coupling/decoupling the hoses, make sure that the pump power pack is switched off (electric connection) or disconnected from the mains and that the lines are unpressurized.

8.2 Operating of the star grip 1.1

Extend device:

Rotate star shape ring 1.1 to the right hand side and hold it in this position.

Retract device:

Rotate star shape ring 1.1 to the left hand side and hold it in this position.

Load sustain function:

If released, the star shape ring 1.1 returns automatically to center position, maintaining fully the load sustain function.

8.3 Principles on rescue rams

8.3.1 LZR../... und LTR../..

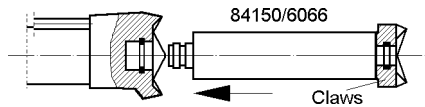
Important!

When applying the tool make sure that all tips of both the body - mounted and the piston - mounted claw have a firm and safe grip with the load so as to avoid any point load. Lifted loads have to be supported by suitable cribbings or other packings.

8.3.2 Use of extensions

According to the regulations of DIN 14751 T3, and DIN EN 13204 (draft 6.98) a use of extensions is not allowed.

Where this instruction does not apply, the extension 250 mm may be used only with the LZR 12/300EN and as shown in the drawing.



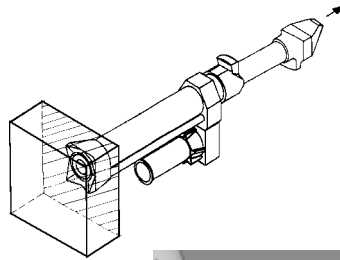
Important!

Watch the rescue cylinder and the extension closely during the operation.

8.3.3 LZR 12/550 PS

Preparation of the wall (penetration)

To start the peeling function a hole of 60 x 60 mm has to be made. The cylinder with penetration tip has to be adjusted to a counterpart and the ram hydraulically extended to create a hole in the wall.



Attention:

No person is allowed to stand behind the wall while creating the hole in the wall.

Peeling operation

The rescue ram is placed into the hole by using the counterpart of the peeling tip as starting point. By extending the rescue ram with the peeling tip hydraulically an opening as far as the stroke of the cylinder can be made. Peeling operation see picture on the left. To create a "man hole" the peeling operation has to be made four times. The direction for each peeling operation has to be changed by 90° to create a rectangular opening.



8.3.4 Warnings

Before any operation of the rescue ram unit make sure that the extension of the piston rods with claws does not constitute a risk to persons (involved or uninvolved) or that the piston movement or cut-off parts jerking away cannot damage property.

Important!

The claws must be jammed tight even in case of long strokes. **Avoid slipping through proper application!**

Do not use the piston for carrying the device!

Use of stroke extension pieces is not allowed (except LZR 12/300EN)!

9 Dismantling of the device / Stop after operation

9.1 Rescue ram

After each use retract the piston rod until it protrudes only a few mm. This hydraulically and mechanically relaxes the device.

9.2 Hydraulic power pack

Stop the hydraulic power pack after operation.
This is mandatory before taking one of the following steps:

9.3 Hoses

During longer breaks, the hoses should be decoupled.

10 Maintenance

10.1 Rescue ram

After operation or at the end of a shift inspect the components for perfect function (when the device is dirty, clean it before inspection):

Visual inspection

- Ram and piston rod without damages and deformations,
- Claws in the right position and jammed tight,
- Claws in a good condition (breaks),
- No leakages,
- Easy operation of the star grip,
- Handle existing and fast,
- Identification plate and position plates legible,
- Quick connect couplings can be connected easily,
- Dust covers in the right position.

Hoses

- Check according safety instructions for hoses (see item 5),
- Check for oil leakage.

Function testing

- Piston stroke can be retracted and extended to the full length (see technical data 13),
- Perfect opening and closing with star grip standard version.

11 Repairs

11.1 General

Servicing must be carried out only by the device manufacturer or by personnel trained by the manufacturer or the authorised LUKAS dealers.

For replacement on all components, use only genuine LUKAS spare parts as specified in the spare parts list, as here possibly required special tools, mounting information, safety aspects, testing must absolutely be taken into account. See section 4.

Protection of the device against hydraulic overload

If the short hoses of the tool are not connected with the power pack, pressure can be built up unintentionally in the cylinder due to temperature increase. Therefore, the return hose (0,5m / blue) of the tool is equipped with a safety coupling (quick connect plug, colour yellow). Unintentional overpressure (more than approx. 2-3 MPa) is released through this plug: oil comes out.

Should the tool have been equipped with couplers of different brand which do not have this safety function, overpressure would be released through another safety valve (adjusted to approx. 2 MPa) included with the control valve block. In this case oil spill would be observed in the star grip area.

As soon as sufficient pressure is released the valve becomes tight again. Should further constant leakage occur, please have the tool inspected by LUKAS personnel.

On repair, protective clothing is mandatory (see Section 1), as the cutter units can be pressurized also in unoperated state.

11.2 Preventive maintenance

11.2.1 Maintenance advice

To protect the device against external corrosion clean its surface from time to time and slightly grease it with oil.

11.2.2 Maintenance and service work

For maintenance work, LUKAS offers a **service kit** as appropriate equipment.

11.2.3 Function and load test

If there is any doubt as to the safety and reliability of the equipment, carry out an additional function and load test. For this purpose, LUKAS offers a **test kit** as appropriate equipment.

11.2.4 Change of hydraulic oil

- after 200 uses, latest after 2 years, the hydraulic oil has to be changed,
- in any case if the oil of the pump (motor / hand pump) which belongs to the unit is changed.
By changing the used oil, it should be avoided that the new oil is polluted by the used oil of the rescue tool.

Procedure:

The rescue tool is in closed (retracted) position • Change of oil has to be effected at the pump.

Screw off the return hose at the pump:

- **in case of hose connection:** screw off the connecting piece of the blue return hose.
- **in case of quick connect couplings:** screw off totally the coupling nut of the quick connect coupling of the blue return hose.

Extend pump with tool slowly • Collect the used oil at the piston rod side in a separate tank and dispose of the used oil (as the used oil of the pump) • Do not operate the pump any longer.

Connect the return hose again to the pump:

- Tighten the coupling nut of the quick connect coupling according to 11.3.3,
- Screw the hose nipple into the valve bloc with $M_A = 45 \text{ Nm}$,
- Ventilate the tool according to 8.1.1.

11.3 Repairs

11.3.1 Oil spill out of the control valve handle

Pressure or return hose are not tightened properly.

Procedure:

Loosen the 2 allen screws (SW5) inside the handle sleeve and remove them together with the short plastic isolation sleeves. Pull handle sleeve backwards until the hose connection points become visible and retighten the retaining nut. Change hose connection sealing rings if necessary. Place handle sleeve again and tighten it with the 2 allen screws. Make sure that the plastic isolation sleeves are placed properly on the allen screws before mounting.

11.3.2 Set of identification stickers

All damaged or illegible identification stickers (Safety instructions, type label a.s.o) have to be replaced.

Procedure:

Remove damaged stickers and clean surface with acetone • Put on new stickers.

11.3.3 Quick couplers

Quick couplers on the 0,5m hoses have to be replaced when

- external damage can be observed,
- the locking sleeve doesn't work any more,
- oil spill occurs even when the coupling is properly connected.

Remark: Faulty couplers have to be changed completely against genuine LUKAS spares, i.e. it is not permissible to make any repair work.

The retaining nut on the hoses has to be tightened with a torque of $M_A = 45 \text{ Nm}$

12 Troubleshooting

Trouble	Check	Cause	Remedy
Hoses cannot be coupled		Pressurized	Relieve pump pressure
On actuating pistons move slowly or by jerks	Hoses correctly connected power pack operating.	Air in hydraulic system	Thoroughly vent pump unit: see 8.1.1
No pressure build-up		not enough oil in hand resp. motor pump	Refill oil and vent the system (see operating instr. 8.1.1)
Star grip doesn't return to zero when released		Return spring is damaged or return mechanism is dirty	Ask LUKAS dealer for repair
Oil leakage out of hoses or hose fittings		Untightness, eventually damages	Replace hoses
Surface of hydraulic hoses is dissolved		Contact with aggressive fluids	Change hoses
Leakages on the piston rod		Seal defective Piston rod	Replacement of seals by authorised dealer or LUKAS themselves

If the defects cannot be repaired, contact an authorised LUKAS dealer or the LUKAS service department. The address:

LUKAS Hydraulik GmbH & Co. KG, Weinstraße 39, D-91058 Erlangen, Pf 2560, D-91013 Erlangen, service phone 09131/698 348; fax 09131/698 353

13 Technical data

Type	LZR 12/300 EN	LZR 12/500 EN	LZR 12/700 EN	LZR12/550PS	LZR 19/325
Ref. No.	84150/6101	84150/6102	84150/6103	84150/6088	84150/6092
Compressive force (kN) (in all operating ranges)	120				190
Piston stroke (mm)	300	500	700	550	325
Length retracted (mm)	450	680	900	800	460
Length extended (mm)	750	1180	1600	1350	785
Dimensions wxh (mm)	171 x 82			192 x 82	110 x 200
Weight (incl. oil filling) kg	13,0	18,0	24,0	21,8	14,3
Operating pressure MPa	63 *				
max. permissible pressure	see identification plate				
usable oil quantity (l) ¹	0,5	0,8	1,2	0,7	0,8
DIN 14751	RZ1.1 2001TP18 (TÜV)	RZ1.2 2001TP18 (TÜV)	RZ1.3 2001TP18 (TÜV)		
European Norm pr EN 13204 (April 98)	HR 01-2000 (TÜV)	HR 02-2000 (TÜV)	HR 03-2000 (TÜV)		
USA NFPA 1936	Technical Report No. 70000275-1 (TÜV-Produkt Service)				

Type	LTR 6/570	LTR 3,5/820
Ref. No.	84150/6089	84150/6091
Compressive force (kN) piston 1	190	240
Compressive force (kN) piston 2	60	120
Compressive force (kN) piston 3	-	35
Stroke (mm) piston 1	325	295
Stroke (mm) piston 2	245	280
Stroke (mm) piston 3		245
Piston stroke total (mm)	570	820
Length retracted (mm)	460	445
Length extended (mm)	1030	1265
Dimensions wxh (mm)	110 x 200	115 x 210
Weight (incl. oil filling) kg	16,9	20,8
Operating pressure MPa	max 63 *	
max. permissible pressure	see type label	
usable oil quantity (l) ¹	1,0	1,5
DIN 14751	RZ 10-93-TP18 (TÜV)	RZ 14-97-TP18 (TÜV)

* 1MPa = 10 bar
¹ Necessary oil quantity in the hydraulic power pack for operating the tool (Difference in quantity piston / rode side)

13.1 Peeling with LZR 12/550PS

max. thickness of steel (mm)	6
max. opening (mmxmm)	550 x 550

13.2 Oil recommendations

For LUKAS hydraulic devices, use mineral oil in accordance with DIN 51 524 and others

	Range of oil temperature	Viscosity rating	Remarks
A	- 24 ... + 30°C	HL 5	
B	- 18 ... + 50°C	HLP 10	
C	- 8 ... + 75°C	HLP 22	
D	+ 5 ... + 80°C	HLP 32	
E	- 8 ... + 70°C	HF - E15	biodegradable

Recommended viscosity range: 10 ... 200 mm²/s,
delivered with HLP 22 to DIN 51 524

13.3 LUKAS Hoses

Bending radius	Rmin = 38 mm
Burst resistance	safety factor: burst pressure/max. operating pressure min. 4 : 1
Temperature resistance	- 40°C ... +100°C
Operating medium	Mineral oil according to DIN 51524

13.4 Others

Working temperature	-20 +55°C
Ambient temperature (power pack in operation)	-24 +45°C
Storage temperature (power pack not in operation)	-30 +60°C

LUKAS Hydraulik GmbH & Co. KG
A Unit of IDEX Corporation
Weinstraße 39, 91058 Erlangen • Germany
Postfach 2560, 91013 Erlangen • Germany
Telefon +49 (0) 9131 698-0 • Telefax +49 (0)9131 698-394
e-mail: info@lukas.de

The logo for LUKAS, featuring the word "LUKAS" in a bold, italicized, sans-serif font.The logo for IDEX CORPORATION, featuring the word "IDEX" in a bold, italicized, sans-serif font above the words "IDEX CORPORATION" in a smaller, all-caps, sans-serif font.