

Air Pump

HYDRAULIC PA6 SERIES

98 cm³/min.
Single-Acting

Compact, lightweight and portable. Single-Speed pumps designed to drive single-acting cylinders.

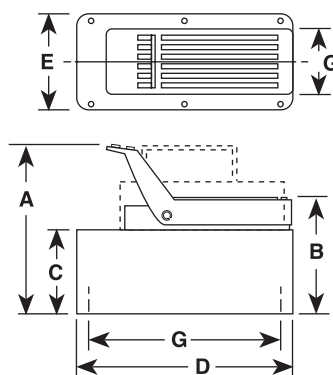
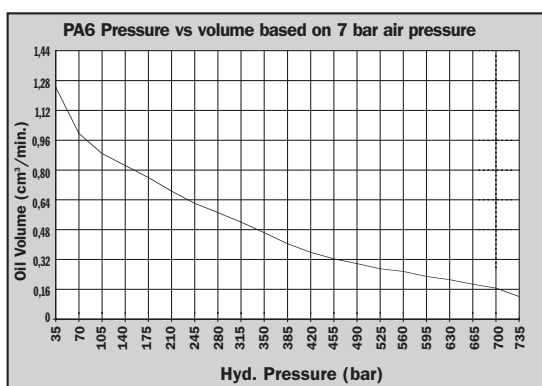
- The power unit of choice for major manufacturers of auto body, frame straighteners and other equipment.
- Operate at 3-8 bar shop air pressure at the pump.
- Internal relief valve protects circuit components, air inlet filter protects motor.
- Serviceable pump motor is not a "throw away", providing economical repair.
- Permanently vented reservoir cap.
- dBA 85 at 700 bar.



PA6

700 bar

PUMPS



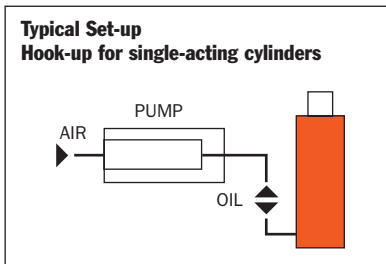
| Pump No. | A (mm) | B (mm) | C (mm) | D (mm) | E (mm) | G (mm) |
|----------|--------|--------|--------|--------|--------|-----------|
| PA6 | 197 | 149 | 111 | 241 | 127 | 102 x 229 |
| PAGA | 197 | 149 | 111 | 241 | 127 | 102 x 229 |
| PAGAM | 197 | 149 | 111 | 241 | 127 | 102 x 229 |
| PAGM | 197 | 149 | 111 | 241 | 127 | 102 x 229 |
| PAGR | 197 | 149 | 111 | 241 | 127 | 102 x 229 |
| PA6RM | 197 | 149 | 111 | 241 | 127 | 102 x 229 |
| PA6M-1 | 200 | 152 | 111 | 321 | 187 | — |
| PAGAM-2 | 254 | 197 | 171 | 292 | 241 | 203 x 254 |
| PAG-2 | 260 | 203 | 178 | 292 | 241 | 130 x 181 |



PA6M-1



PA6-2



| Description | Order No. | Air Supply Req'd (bar) | Reservoir Cap. (l) | Reservoir Usable (l) | Oil Port (in) | Prod. Wt. (kg) |
|---|---------------|------------------------|--------------------|----------------------|-----------------------------------|----------------|
| Base model pump with high density polyethylene reservoir. | PA6 | 3-8 | 1,7 | 1,6 | ³ / ₈ -NPTF | 6,3 |
| PA6 with externally adjustable relief valve. | PA6A | 3-8 | 1,7 | 1,6 | ³ / ₈ -NPTF | 6,8 |
| PA6A with metal reservoir. | PAGAM | 3-8 | 1,7 | 1,6 | ³ / ₈ -NPTF | 7,7 |
| PA6, except has metal reservoir. | PA6M | 3-8 | 1,7 | 1,6 | ³ / ₈ -NPTF | 8,2 |
| PA6 with 3,7m remote control. | PA6R | 3-8 | 1,7 | 1,6 | ³ / ₈ -NPTF | 9,3 |
| PA6R, except has metal reservoir. | PAGRM | 3-8 | 1,7 | 1,6 | ³ / ₈ -NPTF | 9,8 |
| PA6, except has 3,8 l metal reservoir. | PA6M-1 | 3-8 | 3,8 | 3,0 | ³ / ₈ -NPTF | 10,7 |
| PA6, except has 7,6 l, high density polyethylene reservoir. | PA6-2 | 3-8 | 7,6 | 7,3 | ³ / ₈ -NPTF | 11,1 |
| PA6, except has 9,5 l metal reservoir. | PA6M-2 | 3-8 | 9,5 | 9,1 | ³ / ₈ -NPTF | 14,5 |



PT Hydraulics Australia Pty. Ltd
 19 Ricketts Rd, Mt. Waverley
 Phone: 03 9562 8800
 Fax: 03 9562 8080
 www.pthydraulics.com.au
 rescue@pthydraulics.com.au

www.powerteam.com